



ELECTIVES

**National Curriculum
Key Stage 4**

2010 ~ 2012



INTRODUCTION

KEY STAGE 4

Now that you are in your third year at Broughton Hall you are nearing the time when, with the advice of your teachers and the help of your parents, you will have to make decisions about your future course of study.

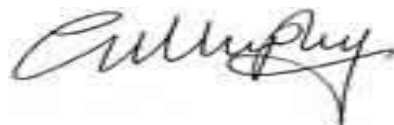
The decisions you make will help to develop your individual interests and abilities.

In making your choices you should consider:

- Which subjects interest you most?
- If you have the ability to succeed in these subjects?
- Does the assessment style of these subjects suit you as a learner?
- How will this choice of subjects impact on future career choices?
Will doors be closed to you?
- Have you made a personal decision or have you been influenced by friends' choices?

Read this booklet carefully and seek out the guidance of staff and parents. In making your choices you need to be aware that some subjects are only open to a limited number of pupils. If a subject is oversubscribed, ability in that subject and attitude to work will be taken into consideration when selecting pupils. Equally, if the number of pupils for a particular subject is low, the class will not be offered.

Mrs Grant, Deputy Head Teacher, is happy to deal with any queries regarding the Curriculum.



KEY STAGE 4 ELECTIVES ~ 2010 - 2012

In years 7-9 all pupils studied the same subjects as required by the National Curriculum. During years 10 and 11 some subjects are still compulsory but others are optional.

THE CORE

These subjects are compulsory. They include:-

- RE
- English Language & Literature
- Mathematics
- Science or Science with ICT
- Spanish or Asdan (not Diploma Pathway)
- General PE
- Careers Education and Guidance
- Personal, Social, Health and Economic Education (PSHE)

The **Electives System** is made up of pathways and free choices. There are three main pathways.

Traditional
Applied
Diploma

Elective Subjects

ICT*	Business Studies*
French	Art & Design*
History	Dance
Health & Social Care*	Drama
Geography	Music
Technology*	
Physical Education*	

*Applied subjects available

The Traditional Pathway

This pathway is for pupils who want to study a broad range of subjects. The majority of pupils will follow this pathway. Pupils will be required to study Spanish and a Technology subject, in addition to choosing **two subjects** from the Electives.

The opportunity to study ICT or Media after school exists. Only a limited number of places exist in these After School Classes, and these will be offered on the basis of ability and aptitude. Careful consideration will be given to the impact of this additional workload on a pupil's ability to succeed at Key Stage 4.

The Applied Pathway

Between 50-60 pupils are likely to select this pathway. It is for those students who enjoy a range of subjects. They are likely to prefer a more practical, hands on approach to learning and benefit from continuous assessment/coursework rather than end of module examinations. Pupils are able to select **one Technology** subject and **two Applied Subjects**.

KEY STAGE 4 ELECTIVES ~ 2010 - 2012

The Diploma Pathway

There are two strands to this pathway:

- ♦ Business, Administration and Finance
- ♦ Creative and Media (studied at Holly Lodge)

The Diploma is equivalent to 7 GCSEs at A*-C and is taught across seven lessons per week. It is available to a small number of pupils who show a real interest and aptitude for such a pathway. Pupils opting for this pathway will be expected to have a 6, 6, 5 profile at KS3 and will have a 94% or better attendance. Pupils will follow a personalised curriculum made up of the Diploma, Core Subjects and **one subject** chosen from the Electives.



CORE SUBJECTS

MATHEMATICS

EXAMINATION: MATHEMATICS NEW SPECIFICATION 2010
EDEXCEL : Specification Module B (www.edexcel.org.uk)



Higher
allowed)

Possible grades A*-D (with E

Foundation

Possible grades C - G

Year 10	June	Unit 1	30%	Statistics and Probability
Year 10	November	Unit 2	30%	Number, Algebra, Geometry 1
Year 11	June	Unit 3	40%	Number, Algebra, Geometry 2

COURSE DESCRIPTION

Examinations available March, November and June.

Content The following Attainment Targets are studied. The degree of difficulty varies depending upon the level.

- AT1 Using and Applying Mathematics. These activities will include practical, problem solving and investigational work.
- AT2 Number and Algebra. Use of number, including estimation and approximation, interpreting results and checking reasonableness. Use of symbolic and graphical representation to express relationships.
- AT3 Shape and Space. Use the properties of 2-D and 3-D shapes and use measurement, location and transformation in the study of space.
- AT4 Handling Data. The collection, processing and interpretation of data. Estimating and using probabilities.

Method

The pupils are taught in sets, each pupil studying the course most suited to her ability. All pupils are given every opportunity to reach their potential in mathematics and will be taught by specialist mathematicians.

During the two years students will develop their knowledge, skills and problem solving techniques in a variety of ways, leading to increased confidence in their application of mathematics.

Early entry for some groups at Foundation level. This will provide additional flexibility in Year 11.

For further information on this qualification please contact:

Mr M Tollitt



ENGLISH

EXAMINATION/COURSEWORK

AQA Specification B Higher Foundation

Possible grades A*-D
Possible grades C - G

Written Examinations 30%)	60% (paper I 30%, paper II
Writing coursework	10%
Reading coursework	10%
Speaking and Listening coursework	20%



In order to give pupils the maximum opportunity of achieving success in the examination, all pupils will be entered for GCSE English in Year 10. They will have four lessons of English a week. To deliver the course and prepare pupils for the examination they will start their coursework in Year 9 from May. All written coursework will be completed by the end of the Autumn Term in Year 10 and preparation of the Pre-Release examination booklet will commence in January.

Those pupils who do not achieve a good pass will be selected to join a re-sit group for entry in November. Additional after-school lessons would need to be attended.

The early entry programme has proven extremely successful with over 76% of the current Year 11 already achieving a C or above in their GCSE.

COURSE DESCRIPTION

Coursework:

Speaking and Listening: A range of speaking and listening activities undertaken during the course, three to be selected covering a variety of situations and purposes including the use of standard English.

Writing and Reading: A selection of four pieces:

- personal writing
- writing in response to non-fiction texts
- response to a Shakespeare play
- response to prose

All pupils will continue with English Literature in Year 11 and have 3 lessons a week.

For some pupils it may be necessary to also attend Study Support lessons, in addition to GCSE English, in order to make better progress. Study is designed to improve literacy standards, to give additional support and will be taught by an English specialist.

For further information on this qualification please contact: **Mrs K Poulton**



ENGLISH LITERATURE

EXAMINATION/COURSEWORK

AQA Specification B

Higher	Possible grades	A*-D
Foundation	Possible Grades	C - G

Examination	70%
Coursework	30%



COURSE DESCRIPTION

Six substantial texts are studied:

3 Published before 1914 drama, poetry, prose.

3 Published after 1914 drama, poetry, prose.

Coursework:

A selection of three pieces including response to one drama, one poetry and one prose text, none of which has been studied for the examination. The coursework must demonstrate understanding of literary tradition, and appreciation of social, historical and cultural contexts. One of the three pieces must explore relationships/comparisons between texts.

Examination:

Pupils are allowed to have their books with them in the examination, the emphasis being on thoughtful personal response rather than memorised quotations and notes.

Work for this course is integrated into English lessons. The aim is to enter all pupils for both English and English Literature.

For further information on this qualification please contact: **Mrs K Poulton**



SCIENCE

EXAMINATION / PRACTICAL ASSESSEMENTS

Edexcel 360 Science

COURSE DESCRIPTION

- ♦ 2 GCSEs offered namely Core Science **examined** during Year 10, Additional Science **examined** during Year 11.
- ♦ Both GCSEs will be offered at: Higher A* - C
Foundation C - G
- ♦ There will be an internally assessed component which will represent 40% of the total assessment.
- ♦ Balanced Science GCSEs covering topics in Biology, Chemistry and Physics.



Method

The aim is to provide all pupils with a balanced science course which includes the major concepts, principles and applications of Biology, Chemistry and Physics.

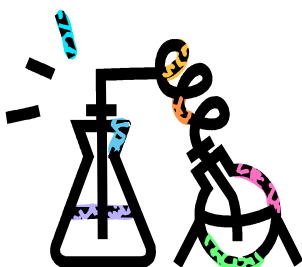
It is hoped that students will become confident in a technological world, will recognise the usefulness and limitations of scientific methods and will be encouraged to take on further studies in Science.

This we hope, will be achieved by following a course aimed at active pupil participation, backed up by consistent hard work and regular completion of homework.

Progression

Learners are able to progress onto GCE A Levels in Biology, Chemistry, Physics or Science, Engineering or Technology related courses.

For further information on this qualification please contact: **Mr M Brierley.**



BTEC EXTENDED CERTIFICATE IN APPLIED SCIENCE

EDEXCEL : BTEC FIRST CERTIFICATE

- ♦ Work related qualification
- ♦ Alternative practical based learning
- ♦ Equal to 2 GCSEs
- ♦ 100% internally assessed via Portfolio
- ♦ Balanced Science covering work related topics in Biology, Chemistry and Physics



- ♦ Grading system of

Pass	2 grade C GCSE's
Merit	2 grade B GCSE's
Distinction	2 grade A GCSE's

Candidates for whom a vocational approach is more appropriate will take BTEC Science, such students are likely to have achieved a Level 5 in Science at KS3

Method

The aim is to encourage and develop science vocational skills, where learners simulate or towards the role of being employed as an assistant practitioner / technician during their coursework.

Teaching strategies reflect the nature of work within science-based industries, using a series of assignment and activities encouraging learners to take responsibility and ownership for their learning.

Progression

Learners may progress to GCE Applied Science or a BTEC National in Applied Science or enter employment.

For further information on this qualification please contact: **Mr M Brierley**



RELIGIOUS STUDIES

EXAMINATION

Edexcel Specification A Unit 3 (Year 10)
Single Tier Unit 8 (Year 11)
Possible grades A* - G



Examination 100%

Examination at the end of each unit

COURSE DESCRIPTION

Content

Unit 3: Religion and life based on a study of Catholic Christianity

There are four modules within this topic:

- Religion and Community Cohesion
- Marriage and Family Life
- Matters of Life and Death
- Believing in God

Unit 8: Religion and Society based on a study of Christianity and at least one other religion.

There are four modules:

- Religion: Rights and Responsibilities
- Religion: Environmental and Medical Issues
- Religion: Peace and Conflict
- Religion: Crime and Punishment

Method

Pupils are taught in sets appropriate to their ability. The sets are determined by outcome of continuous assessments in Key Stage 3, consultations with colleagues in RE and other subject areas. Lessons are blocked to facilitate movement between sets as necessary.

Pupils will be entered for the most appropriate examination :

- Full GCSE
- Short GCSE
- Entry Level GCSE

There are many and varied careers that RE supports. Careers which are involved with business, medicine, administration, youth work, social work, teaching, working with young and the elderly, personnel and sport - to name but a few. Any career which involves working with people - team building, problem solving, management and the use of empathy benefits from a GCSE qualification in RE.

For further information on this qualification please contact: **Ms M Canny**

PHYSICAL EDUCATION

In Key Stage 4 all students take Core PE. This is a non-examination subject. The aim is to improve and refine students skills in a range of chosen activities.



Targets include:

- Enhanced knowledge and understanding of chosen activities
- Competency and increased confidence in officiating and coaching
- Increased evaluation skills

The programmes of study challenge students both physically and intellectually. The desired outcome is that students become effective performers, well-informed observers and knowledgeable leaders and officials.

For further information on this qualification please contact: **Mrs K Crummey**



GCSE SPANISH

EXAMINATION / WRITTEN ASSESSMENTS

Higher Tier
Foundation Tier

Possible grades A*- D
Possible grades C - G



This course is open to pupils who have been studying Spanish in 9B1 and 9H1. Other pupils may be considered according to their individual circumstances.

Tiers: pupils are entered according to their ability for tests in listening, and reading at higher or foundation tier. In speaking and writing the level depends on the work presented by the pupils. It is possible to do higher in one skill and foundation in another. This mixture of tiers can help some pupils to achieve a B more easily.

For **listening and reading** exams questions will be in English. These exams are marked externally and are worth 20% each.

For the **speaking**, pupils will have to submit two tasks such as an open interaction or role-play (like a non-scripted play), a discussion with your teacher about a photo or picture that you have brought in of something personal to you, or a short presentation about something that interests you. These may be done at different times in the course when you are ready. The speaking is worth 30%.

For the **written assessments** you will carry out two pieces of writing each of a different nature, for example an article for a magazine, a web page, a blog, or a letter. Students aiming for grade C or above will need to demonstrate more extended writing skills and are, therefore, expected to produce over 200 words in each task. Assessments are produced under controlled conditions but you may refer to notes and a dictionary. Again, these may be done at different times in the course when you are ready. The writing is worth 30%

COURSE DESCRIPTION

Sample Topics

Please note that plans for the new GCSE are still being finalised, so the specifications are therefore subject to change.

Personal information

General interests
Leisure activities
Family and friends
Lifestyle (healthy eating and exercise)

Customer service and Transactions

Cafés and restaurants
Shops
Dealing with problems



Pupils will build on their existing knowledge of Spanish and will learn further grammatical structures and vocabulary while working through the prescribed themes and topics.

For further information on this qualification please contact: **Mrs B Davies**

PSHE : PERSONAL WELLBEING/ FINANCIAL MANAGEMENT

The personal wellbeing and financial management curriculum deals with many real life issues that young people face as they grow up.

It provides the knowledge, skills and attributes students need to lead safe, healthy, responsible, fulfilled lives as confident individuals and members of society. Students learn about businesses, different types of work, how to manage money and budget.

PSHE education enables school to promote the well-being of students, provide advice and guidance on a variety of issues from relationships, healthy lifestyle, citizenship to careers and work related learning.



For further information on this qualification please contact: **Ms A Roberts**

ELECTIVE SUBJECTS

BTEC EXTENDED CERTIFICATE ART & DESIGN

EXAMINING BOARD: EDEXCEL
EQUIVALENT TO 2 GCSES A* - C

This is a vocational qualification and projects are based on work related scenarios in order to give students an insight into the process of working to design briefs.



BTEC qualifications are recognised by schools, colleges, universities and employers across the UK and in over 100 countries worldwide. The BTEC allows students to move on to higher level qualifications in Sixth Form or at Colleges of Higher Education.

BTEC Art and Design consists of 3 Units:

- Unit 1 2D and 3D Visual Communications (working with different materials)
- Unit 2 Contextual References in Art and Design (Artists and Designers)
- Unit 3 Working with 3D Design Briefs

The assessment process is ongoing throughout the 2 year course. Projects are graded as Pass (2 C's) Merit (2 B's) Distinction (2 A's)

This course enables pupils to move on to an advanced level BTEC in Art & Design in Sixth Form. The BTEC route can be followed into further Education at higher levels.

*Although this is mainly a practical course, there is a written element and students would be expected to write about their own work and influences of artists and designers, relevant to the projects being studied.

For further information on this qualification please contact: **Ms C Adamson.**



BUSINESS STUDIES

Business Studies looks at the business world from the point of view of the business person – the entrepreneur. Students will study a range of topics that relate to the real world and which will be of use to them in their future lives.



For example, you will:

- ◆ Learn about how firms recruit and select employees. This will help you when you are trying to find employment.
- ◆ Find out about the importance of Trade Unions in the workplace.
- ◆ Find out why exchange rates are important to British businesses and why a strong Pound can affect British jobs.
- ◆ Examine different types of business organisations. For example, you will find out why Man Utd has PLC after its name while Everton has Ltd. after its name.
- ◆ Find out why many firms prefer to locate their business in the South-East of England rather than Liverpool and also what the Government tries to do to prevent this from happening too often.
- ◆ Learn about your Employment Rights when you apply for or find a job.
- ◆ Find out why it is that large organisations such as Asda can afford to sell their goods at a much lower price than a 'corner shop' and examine the factors that lead to the continued survival of small shops.
- ◆ Examine ways in which companies try to motivate their staff in order to help make the business a success. You will also learn how your wage packet is calculated and what deductions are taken from it each month.

Pupils choosing to study Business Studies will be selected to follow a course of study based upon their ability and learning style. Two options will be available to students:

OCR GCSE Business Studies – This OCR GCSE is aimed at more able students and consists of three units:

Unit 1: Marketing and Enterprise (25%)

Unit 2: Business and People (25%)

Unit 3: Production, Finance and External Business Environment (50%)

Unit 1 is an internally assessed controlled assessment task, Unit 2 is an externally assessed unseen exam and Unit 3 is an external exam based upon a pre-released case study.

OCR Level 2 National Award in Business – This is a vocational course that is equivalent to two GCSEs. It is assessed entirely through the completion of coursework and consists of 3 units:

Unit 1: Investigating Business

Unit 2: Communication in Business

Unit 3: Keeping Customers Happy



Pupils taking this course will develop their ICT, numerical and communication skills. They will investigate real businesses, collecting, analysing and interpreting information and presenting results in a variety of ways e.g. reports, presentations and role plays.

For further information on this qualification please contact: **Mr F Lawell**

DANCE

EXAMINATION / PRACTICAL ASSESMENT

AQA (syllabus 4230)

Single Tier Possible grades A* - G

Examination:

Written	20%
Set Study	20%

Assessment

Performance in a duo or group	20%
Choreography ~ Solo	15%
Group Choreography	25%



COURSE DESCRIPTION

The course demands that:

1. Pupils have a background of knowledge & experience of Dance.
2. Pupils are fully committed to the subject as pupils free time is often called upon for rehearsals for compositions and performance assessments.
3. Pupils will attend dance theatre trips that are crucial to the course content.
4. Pupils are willing to meet the written and theory work demands that accompany the practical elements of this course.
5. External training in dance is a requirement.

The aims of this course are to:

- ♦ Develop understanding and appreciation of a range of dance styles ~ ballet, contemporary, jazz and tap.
- ♦ Develop the knowledge, skills and understanding needed to perform and appreciate dance.
- ♦ Develop life-skills including decision making, critical and creative thinking and the ability to co-operate with others.
- ♦ Develop understanding and knowledge on Health and Safety, Physical setting, accompaniment, choreographic and performance skills.
- ♦ Pupils must have the skill and confidence to perform and choreograph a solo dance
- ♦ Street Dance will not feature in the course nor will it equip the pupils with skills required to gain a good GCSE grade.
- ♦ Looking at a range of Dance works - Ballet, Jazz, Contemporary - developing analysis & appreciation, skills of action, space, dynamics, relationships, set, light, accompaniment and theme.



For further information on this qualification please contact: **Ms K Crummey**

DRAMA

CONTROLLED ASSESSMENT / VISITING EXAMINER

EDEXCEL Specification

COURSE DESCRIPTION

There are 3 units:



1. Exploring Drama in a practical way with a Controlled Assessment and written commentary. 30%
2. Exploring Play Texts focusing on characters, interpretations of plays and design implications - with a Controlled Assessment and written commentary. 30%
3. Drama Performance - devised or scripted / play - performance to an audience including a visiting examiner 40%

During the course you will be given opportunities to attend live theatre performances. This is an essential part of this course.

ARE YOU, OR COULD YOU BE? :

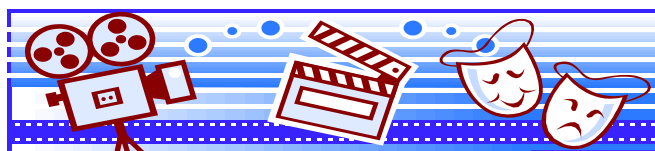
- Confident in standing up in front of an audience and performing in public?
- Confident in your ability and willingness to not be self-conscious and embarrassed in front of your peers and adults?
- Excited at the thought of "losing yourself" in another character in devised or scripted drama?
- Willing to work collaboratively and creatively in putting a production together?
- Ready for the sheer hard work and discipline that are required for rehearsals and performances?
- Someone who has an excellent attendance record, as much of the work is done in groups.

If your answers to these questions are **YES** ~ This could be the course for you.

WHY DRAMA?

Drama is a subject that helps build self-confidence and promotes team work. It is useful for a number of careers, particularly those which involve interpersonal communication skills.

For further information on this qualification please contact: **Mr M Mangan**



GEOGRAPHY

EXAMINATION/ CONTROLLED ASSESSMENT

EDEXCEL Specification B

Higher Possible grades A*-D
Foundation Possible grades C - G

Examination 75% (3 papers)
Controlled Assessment 25% (One piece of coursework)



This is a Modular exam course taken over two years

EXAM PAPERS

- ♦ Paper 1 and 2 contain short structured questions.
- ♦ Paper 3 is decision making. You will have an information book in class, which you can take into the examination.

COURSE DESCRIPTION

Almost any day of the week there are geographical stories in the news on migration, earthquakes, or climate change and the world we live in is changing very rapidly. Geography will help you understand and explain these issues.

The course contains lots of short topics, such as earthquakes and volcanoes, choosing places to live, energy supply, natural environments, world of work and many more

You will have to produce just one coursework project. This requires you to do some fieldwork. In recent years we've been to the Peak District, to Ormskirk and to Liverpool City Centre and Freshfield.

The exam itself consists of structured, short and medium length questions, and you have some choice in which questions you answer.

GEOGRAPHY LESSONS

In Geography GCSE we use lots of different classroom activities. This will include lots of oral work such as presentations and drama, we watch videos, do group research projects, and map work. We also use thinking skills activities such as mysteries and card sorting and you can go outside on field visits to continue your study.

Through studying Geography GCSE you will improve lots of important skills. You will be able to do the following: handle data, make decisions, analyze material, write reports, use computers, carry out practical fieldwork, solve problems. You will have a good knowledge of places in the world.

Whatever your plans for the future, the skills and knowledge of the wider world that you will gain through Geography will be valued by colleges and employers. Geography also combines well and has overlaps with many other subjects including Business Studies and Science.

For further information on this qualification please contact: **Mrs J Hitchmough**



HISTORY

EXAMINATION/ CONTROLLED ASSESSMENT

AQA Specification B

Single Tier	Possible grades A* - G
Examination	75%
Controlled Assessment	25%



COURSE DESCRIPTION

Modular Course

Unit 1 The origins of the Cold War 1945—1955. Exam at end of Year 10.

Unit 2 In depth studies of the 20th century- examining different forms of government in Germany and USA.

Unit 3 Historical Enquiry ~ Controlled Assessment ~ On an aspect of British History ~ supplemented by residential site visit to France/ Belgium.

Aims of Course

- ♦ To stimulate interest in and enthusiasm for the study of the past.
- ♦ To promote understanding of links between the past and the present.
- ♦ To develop essential study skills including:
 - Knowledge and understanding of history
 - Interpretations of history
 - The use of historical sources
- ♦ To provide a sound basis for further study and pursuit of personal interest.
- ♦ To provide candidates with an understanding of some of the major issues of the modern world.



Teaching/ Learning methods

- ♦ The pupils will be taught in ability sets.
- ♦ A wide variety of teaching methods and materials will be used.
- ♦ Self study skills will be developed.

Pupils will have access to a very wide range of historical source material and evidence including books, newspapers, eye-witness accounts, newsreel footage, video and audio tapes plus site visits.

GCSE History is a highly regarded academic subject which employers in all careers like to see as it shows that you have highly developed skills of research, analysis and comprehension which can be applied in any area of life.

GCSE History can lead you on to the study of A Level or Degree level History which opens the door to many high earning careers e.g. Law, Journalism, Media, tourism (Heritage), Marketing, Politics, Armed Services.

For further information on this qualification please contact: **Mrs L Fielding**

ICT ~ OCR LEVEL 2 NATIONALS IN ICT

The **OCR Level 2 Nationals in ICT** have been developed to provide candidates with an introduction to the skills, knowledge and understanding required to prepare for work in the information and communication technology sector. They have also been designed to help candidates develop their personal skills in the areas of team working, career planning, communication and problem solving. They accredit candidates' ability to carry out a range of tasks and have been designed to accredit candidates' achievements in a modern, practical way that is relevant to the workplace.



The OCR Level 2 Nationals in ICT are qualifications that have been accredited by the QCA to the National Qualifications Framework.

Qualification Structure

Students will be entered for the full OCR Level 2 National First Award in ICT. To achieve this, students must complete the mandatory unit (Unit 1), plus 2 other optional units. Hence, students must complete 3 full units.

Unit 1 – ICT Skills for Business (mandatory unit)

The main elements of this unit are:

- AO1 – Demonstrate good working practices with files, folders and subfolders.
- AO2 – Use of internet for searching and selecting information. Use of email.
- AO3 – Produce a PowerPoint presentation.
- AO4 – Use Publisher to create a range of business documents.
- AO5 – Create a spreadsheet.
- AO6 – Use a database.

The remaining 2 optional units will be chosen from the following: webpage creation, digital imaging, design and production of multimedia products, desktop publishing, spreadsheets, databases, e-commerce, customer support, planning and supporting telecommunications, career planning, work experience, IT systems and user needs, installation of applications, system testing and maintenance, repair and decommissioning of IT equipment, CAD / CAM and application of computer control.

This will provide students with the opportunity to achieve a merit or distinction in this unit. There is the possibility to study more than three units, depending on the application and progress made by individual students. Some further units will need to be studied to gain additional tariff points.

Assessment

All units are centre assessed and externally moderated by an OCR Visiting Moderator. All units and full awards are graded Pass, Merit and Distinction.

Progression Routes

Progression into employment: These qualifications are designed to enable candidates to enter employment at operative or trainee level within a wide range of business environment. Such candidates would normally enter employment through a work related training programme.

Progression to further qualifications: These qualifications have been designed to aid progression to GCE or GCE Applied ICT. They will also provide a basis for progression to other qualifications at Level 3 of the National Qualifications Framework.

For further information on this qualification please contact: **Mr T Wilkinson.**

MUSIC

Areas of Study:

1. Western Classical music 1600-1899
2. Music in the 20th Century
3. Popular music in context
4. World Music



Unit 1 (Coursework & Examination): Performing Music (30%)

Perform 2 pieces (one solo, one ensemble) on chosen instrument/voice.

Solo Performance	15%
Ensemble Performance	15%

Unit 2 (Coursework & Examination): Composition (30%)

2 compositions, written to a set brief, each inspired by one of the four **Areas of Study**.



Unit 3: Examination: Listening (40%)

A 90 minute written paper containing questions based on 3 set works from each of the above **Areas of Study**: 12 works in all.

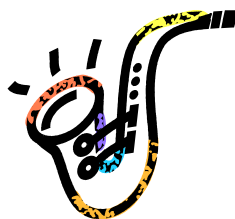
Music GCSE is a highly academic course, as well as stretching students' performance and creative skills. There is much scientific evidence to suggest that studying Music improves students' brain function and so benefits their overall learning, not only in Music, but across their academic studies.

*Students are required to sing or play an instrument and must **rehearse daily** in order to reach the required standard. Students who do not play an instrument are strongly advised to have lessons in either guitar, piano/keyboard or voice. Broughton Hall subsidises the cost of instrumental lessons and parents make a contribution (£75.00 per term) towards them. Where severe cases of financial hardship exist, the School aims to support talented students who wish to study GCSE Music. For further information, please speak to Miss Hayes.*



Students must have an **open mind** to **different kinds of music** & be willing to take part in a variety of musical activities. Students are encouraged to join the school's extra-curricular music activities (e.g. Choir, Vocal Group, Band) which will greatly develop their musical skills.

For further information on this qualification please contact: **Ms S Hayes**

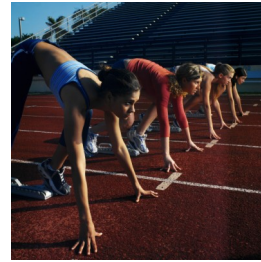


PHYSICAL EDUCATION

EXAMINATION / PRACTICAL COURSEWORK ~

EDEXCEL

Single tier	Possible grades	A* - G
Examination:	Written Examinations	40%
	Practical Examination	25%
Coursework:	Practical	25%
	Analysis of Performance	10%



COURSE DESCRIPTION

GCSE Physical Education contains both theoretical and practical elements.

Theoretical

Pupils will be tested on their knowledge and understanding of:

- The structure and function of the body
- The effects of exercise and benefits of training on the human body
- The rules, tactics and relevant safety aspects of selected physical activities
- Common sports injuries and relevant first aid
- Diet and nutrition
- Factors affecting participation and performance



Practical

Pupils are assessed on their skills and abilities in four chosen activities. The selection is made from the following:



Hockey	Rounders
Netball	Athletics
Dance	Gymnastics
Fitness	Swimming

Pupils may also choose to be assessed in sports where they have gained experience outside school. Eg Karate, Trampolining etc.

Assessment in practical areas will be an ongoing process which will culminate in a practical examination at the end of the course.

For further information on this qualification please contact: **Ms K Crummey**

BTEC First Certificate in Sport

Edexcel BTEC level 2 First Certificate in Sport

- ♦ Designed to introduce learners to working in the sport and leisure industry or prepare them for further study such as a BTEC National qualification or an appropriate NVQ.
- ♦ 3 lessons a week to with both theory and practical units with some off site work.
- ♦ The course involves 100% internal assessment via portfolio.



BTEC First Certificate grading system :

Pass	2 grade C GCSE's
Merit	2 grade B GCSE's
Distinction	2 grade A GCSE's

Core Units

- The Body in Sport
- Health, Safety and Injury in Sport

Students **MUST** complete at least one of these units.

Specialist Units

- The Sports Industry
- Preparation for Sport
- Planning and Leading Sports Activities
- Practical Sport

Students **must** complete all four units.

For further information on this qualification please contact: **Mrs K Crummey**

FRENCH

EXAMINATION / WRITTEN ASSESSMENTS

Higher Tier

Foundation Tier

Possible grades A*-D

Possible grades C-G



Tiers: pupils are entered according to their ability for tests in listening, and reading at higher or foundation tier. In speaking and writing the level depends on the work presented by the pupils. It is possible to do higher in one skill and foundation in another. This mixture of tiers can help some pupils to achieve a B more easily.

For **listening and reading** exams questions will be in English. These exams are marked externally and are worth 20% each.

For the **speaking**, pupils will have to submit two tasks such as an open interaction or role-play (like a non-scripted play), a discussion with your teacher about a photo or picture that you have brought in of something personal to you, or a short presentation about something that interests you. These may be done at different times in the course when you are ready. The speaking is worth 30%.

For the **written assessments** you will carry out two pieces of writing each of a different nature, for example an article for a magazine, a web page, a blog, or a letter. Students aiming for grade C or above will need to demonstrate more extended writing skills and are, therefore, expected to produce over 200 words in each task. Assessments are produced under controlled conditions but you may refer to notes and a dictionary. Again, these may be done at different times in the course when you are ready. The writing is worth 30%

COURSE DESCRIPTION

Sample Topics:

Personal information

General interests

Leisure activities

Family and friends

Lifestyle (healthy eating and exercise)

Please note that plans for the new GCSE are still being finalised, so the specifications are therefore

Customer service and transactions

Cafés and restaurants

Shops

Dealing with problems

Pupils will build on their existing knowledge of French and will learn further grammatical structures and vocabulary while working through the prescribed themes and topics.

(9HS see page 11 for Spanish course details)



For further information on this qualification please contact: **Mrs B Davies**

HEALTH AND SOCIAL CARE

EXAMINATION / CONTROLLED ASSESSMENTS

OCR Applied GCSE ~ One 4-unit course of study,
leading to one or two GCSE A* - G

COURSE DESCRIPTION

The OCR Applied GCSE in Health and Social Care has been designed to provide students with an overview of the services, roles and responsibilities of carers, within Health and Social Care in England.

The qualification provides students with skills, a broad knowledge and understanding of the area and contributes to the development of carer opportunities in Health Care as well as enabling progression within the National Qualifications framework.

The units are assessed as follows:

UNIT	TITLE	ASSESSMENT	
A911 Year 10	Health Social Care and Early Years Provision.	Internal Portfolio & Controlled Assessment	Single Award
A912 Year 10	Understanding Personal Development and Relationships	External Written Paper ~ 1.5 hours (Year 10 ~ June)	
A913 Year 11	Promoting Health and Well Being	Internal Portfolio & Controlled Assessment	Double Award
A914 Year 11	Safe Guarding and protecting Individuals	External Assessment Online (Available twice yearly) or Written Paper	

For further information on this qualification please contact: **Mrs West**

TECHNOLOGY OPTIONS

GCSE IN FOOD TECHNOLOGY



AQA EXAMINING BOARD



Controlled Assessment and examination :

Pupils coursework shall be to produce and make a single product, which accounts for 60% of their final mark. The examination is a 2hr untiered

Practical study in food technology at year 9 is **essential** if you wish to study this subject for G.C.S.E.

Finally, pupils must be aware that the purchase and bringing in of ingredients occurs on a weekly basis, failure to do so results in pupils been exempt from practical lessons and not gaining the practical skills needed to pass the Controlled Assessment in Year 11.

Why study Food Technology?

- Would you like a practical and design challenge?
- Do you enjoy working with food?
- Would you like to keep up to date with the technological issues in food and industry?
- Would you like to develop lifelong skills?



YES

THEN CHOOSE TO STUDY FOOD



Subject details: Food Technology at Key stage 4 provides pupils with the opportunities to design, make and evaluate their own products. Pupils investigate food as a material, its properties, the effects of processing and the appropriate selection of tools and equipment which enable it to be cut, formed, shaped and finished. Written and practical work, together with regular homework's is integral within the course.

For further information on this qualification please contact: **Mrs M Fox**

TEXTILE TECHNOLOGY

EXAMINATION / CONTROLLED ASSESSMENT

AQA

Single Tier entry

Possible Grades A* - G

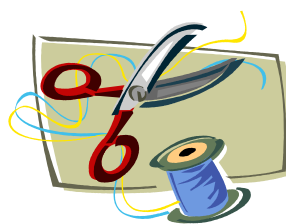
Examination Written Paper

40%

Controlled Assessment ~

60%

A single design and make activity



✂ ✂ If you:

- ◆ Have enjoyed Textiles during KS3
- ◆ Like designing and making products
- ◆ Are interested in fashion and fashion design
- ◆ Enjoy working with a computer, colour and fabrics
- ◆ Have been impressed with the fashion work in the Textiles rooms and the Fashion Show
- ◆ Are hardworking and can meet deadlines
- ◆ Appreciate your work being displayed and admired
- ◆ Can put up with the Textiles teachers and their relentless demands



Then this could be the course for you!!

✂ ✂ During this two year course you will:

- ◆ Put together a portfolio of design work
- ◆ Present a range of fashion design ideas
- ◆ Design and make a selection of products
- ◆ Learn about different fibres, fabrics and Smart materials
- ◆ Carry out a range of product analysis tasks
- ◆ Experiment with a wide variety of decorative techniques
- ◆ Investigate practices applied in industry



Textiles technology offers pupils a wide range of opportunities in Textiles. The Textiles department is well equipped with the latest computer technology which helps to promote a link with industry and gives pupils an insight into the real world of Textiles and current technologies.

Please note: It is not a necessity for students to have an artistic flair to study Textiles at GCSE level.

For further information on this qualification please contact: **Ms C Adamson**

GRAPHIC PRODUCTS

EXAMINATION / CONTROLLED ASSESSMENT

AQA

Single Tier entry ~ Possible Grades A* - G

Examination Written Paper 40%

Controlled Assessment ~ 60%



Why Graphic Products

- Design is now a major part of every item manufactured.
- Develop transferable skills in all aspects of design.
- Bring your own ideas to life.
- Good career paths to well paid interesting courses and jobs

What Happens in Graphic Products.

- ◆ You do not have to be good at drawing to do well in graphics but you MUST be prepared to try.
- ◆ We teach you to improve your drawing skills , how to use a variety of methods to colour and make your work look good. We will teach you to make quality items using card and light materials.
- ◆ We use Computer Aided Design and Computer Aided Manufacture to produce mini projects which will prepare you for your GCSE coursework.

Projects

- ◆ Your first mini project will be for you to come up with ideas and produce the cover for a teenage magazine.
- ◆ Your next project will be to design and produce packaging for a new fast food company.
- ◆ Your GCSE coursework will be to design and produce promotional material for a company of your choice.
- ◆ You will be expected to do research and investigation in you own time. Your ideas will come to life in a high quality and professional way.

For further information on this qualification please contact: **Ms C Adamson**

RESISTANT MATERIALS TECHNOLOGY

EXAMINATION / CONTROLLED ASSESSMENT

AQA

Single Tier entry ~ possible Grades A* - G

Examination Written Paper 40%

Controlled Assessment ~ 60%



Why Resistant Materials

- Design and make using the latest technology .
- Develop transferable skills in all aspects of design.
- Bring your own ideas to life.
- Good career paths to well paid interesting courses and jobs in con-

What Happens in Resistant Materials

- ◆ You do not have to be good at drawing to do well in Resistant Materials but you MUST be prepared to try.
- ◆ We teach you to design and to use a variety of methods to manufacture.
- ◆ We will teach you to make quality items using wood, metal and plastics .
- ◆ We use Computer Aided Design and Computer Aided Manufacture to produce mini projects which will prepare you for your GCSE coursework.

Projects

- ◆ Your first mini project will be for you to come up with ideas and produce the educational toy .
- ◆ You will produce a design folder and be taught to use the machines to manufacture your ideas .
- ◆ Your GCSE coursework will be to design and produce a new lighting system for a modern apartment.
- ◆ You will be expected to do research and investigation in you own time. Your ideas will come to life in a high quality and professional way.

For further information on this qualification please contact: **Ms C Adamson**

GCSE CATERING

Examining Board:- WJEC

ASSESSMENT

- 40% Practical Assessment
- 20% Coursework
- 40% Written Examination



There are 2 tiers - Higher and Foundation.

COURSE CONTENT ~ What will you study?

1. The Catering Industry
2. Nutrition and Menu Planning
3. Food Production
4. Technological Developments

You will work with a wide range of ingredients and you will prepare lots of interesting dishes e.g. Soups & Starters, Fish, Meat, Pastry, Cakes, Desserts, Bread. You will prepare meals for various dietary needs.

Is this course for me



Do you have a natural flare for cooking? You need to have an interest in and enjoyment of food preparation and presentation. This course involves a lot of practical work so you need to be well organised and be prepared to purchase ingredients weekly.

Progression

This course is a suitable basis for further study at 16+ offering progression on to academic and a variety of other vocational courses. This GCSE provides an excellent background for anyone interested in working in the food industry.

For further information on this qualification please contact: **Mrs M Fox**



BTEC EXTENDED CERTIFICATE IN ART & DESIGN – TEXTILES FOCUS

**Examining Board
Assessment**

**Edexcel
100% Coursework
Pass, Merit & Distinction
Equivalent to 2 X GCSE's(A-C)***



All units are assessed and an overall grade for the qualification is awarded

CONTENT

This is a vocational qualification and the projects are based on work related scenarios in order to give students an insight into the process of working to textile design briefs.

- ◆ Students will follow the Edexcel specification that is made up of 2 compulsory units and 1 specialist units.
- ◆ 5 projects are covered during the 2 year course giving pupils the opportunity to develop their mark making, designing and making skills.
- ◆ Students will design and make a textile hanging and a fashion garment.
- ◆ Students will visit the Stockport Hat museum and a fashion history museum.
- ◆ Students will take part in national competitions and will meet working designers.

=====

1 Specialist Unit

Unit No.	: 8	
Title	: Working with Textile Design Briefs	
Method of Assessment	: Portfolio Work	

=====

=====

2 Compulsory Core Units

Unit No.	: 1	
Title	: 2D and 3D Visual Communication	
Unit No. 2	: Contextual Reference in Art & Design	
Method of Assessment	: Portfolio Work	

=====

WHY CHOOSE THE BTEC FIRST CERTIFICATE?

The course is open to pupils who have enjoyed textiles during KS3 and wish to continue their design education on an **applied course that is 100% assessed coursework** with no written exam. It is particularly suitable for students who are undertaking other applied courses at KS4 and enjoy working in a structured environment. All work produced on the 2 year course is assessed and an overall grade for the qualification is awarded.

NB Pupils who wish to take BTEC First Certificate in Art and Design with a 3D focus with the art department cannot enrol on this course but can develop their textiles knowledge and application by opting for the AQA Textiles technology

PROGRESSION

Pupils who complete the BTEC first certificate in Art & Design can progress to the BTEC Nationals in Art & Design or similar level 3 applied courses.

For further information on this qualification please contact: **Ms C Adamson**

BTEC EXTENDED CERTIFICATE IN ART & DESIGN – GRAPHICS FOCUS

Examining Board: Edexcel
Assessment: 100% Coursework
Pass, Merit & Distinction
Equivalent to 2 X GCSE's(A-C)*



All units are assessed and an overall grade for the qualification is awarded

CONTENT

- ◆ This is a vocational qualification and the projects are based on work related scenarios in order to give students an insight into the process of working to Graphic Design Briefs.
- ◆ Students will follow the Edexcel specification that is made up of 2 compulsory units and 1 specialist units.
- ◆ 5 projects are covered during the 2 year course giving pupils the opportunity to develop their mark making, designing and making skills.
- ◆ Students will redesign the corporate identity of an airline and make packaging to promote the new identity, suitable for promotional gifts on a long haul flight.
- ◆ Students will visit the Manchester Airport to look at signage and advertising.
- ◆ Students will take part in national competitions and will meet working designers.

1 Specialist Unit

Unit No : 5
Title : Working with Graphic Design Briefs
Method of Assessment : Portfolio Work

2 Compulsory Core Units

Unit No : 1
Title : 2D and 3D Visual Communication
Unit No. 2 : Contextual Reference in Art & Design
Method of Assessment : Portfolio Work

WHY CHOOSE THE BTEC FIRST CERTIFICATE?

The course is open to pupils who have enjoyed Graphics during KS3 and wish to continue their design education on an **applied course that is 100% assessed coursework** with no written exam. It is particularly suitable for students who are undertaking other applied courses at KS4 and enjoy working in a structured environment. All work produced on the 2 year course is assessed and an overall grade for the qualification is awarded.

NB Pupils who wish to take BTEC First certificate in Art and Design with a 3D focus with the art department cannot enrol on this course but can develop their graphics knowledge and application by opting for the AQA Graphic technology

PROGRESSION

Pupils who complete the BTEC first certificate in Art & Design can progress to the BTEC Nationals in Art & Design or similar level 3 applied courses.

For further information on this qualification please contact: **Ms C Adamson**

DIPLOMAS

BUSINESS ADMINISTRATION AND FINANCE HIGHER LEVEL 2

What is it?

It is an exciting new 2 year course that is designed by employers, universities and schools to give YOU the best range of skills and learning to equip YOU with all the skills needed by employers nowadays.



It is done through a mixture of theory based work and practical work and it is worth **7 GCSEs** at grades A* - C!

Why choose it?

Apart from the fact it is a new and exciting course, designed by employers, universities and schools and offers a great range of topics, the BAF Diploma allows you to get to know every aspect of Business Studies on a practical level.

You will study everything from Finance, Communication to setting up, running and promoting your own mini Business.



Who is it for?

The Diploma will appeal to pupils who are committed, motivated and keen who like to learn about subjects in practical ways that they can relate to real life.

Does doing a Diploma mean choosing a career too early?

Simple answer: No. Pupils will learn about a broad range of careers in their chosen subject and pupils will be able to switch between the different types of qualification: some may choose to take a Higher Diploma from 14-16, then do A levels or an apprenticeship; or they might do GCSEs, then start an Advanced Diploma at 16.



What will you study?

You will study 9 topics/units within the principal learning .
7 of these units will be examined through coursework and 2 will be examined

Principal Learning

- ♦ 7 Business, Admin & Finance Topics
- ♦ (9 Units)

Generic Learning

- ♦ Functional Skills; English, Maths, ICT— Projects

Additional & Specialist Learning

- ♦ 8 Other GCSE Subjects
- ♦ OR BTEC Courses

For further information on this qualification please contact: **Mr F Lawell**

RETAIL BUSINESS DIPLOMA

Whether you've got a career in mind, hope to go to university or just want to see what's out there, this new qualification for 14 to 19 year olds in England offers a mix of classroom learning and hands-on experience in the UK's biggest private sector industry, preparing you for wherever you want to go in life.

The Diploma in Retail Business is very different from qualifications previously offered by schools and colleges. Students who choose it will learn in a practical, creative way that blends academic study with real-life learning and hands-on experience in the workplace, under the guidance of retail professionals. It is an interesting and exciting opportunity to develop a broad understanding of the business of retail.



By choosing the Diploma in Retail Business you will have:

- ♦ A chance to develop a hands-on understanding of retail as a career of choice
- ♦ A structured learning experience that provides you with a chance to develop the skill needed by business and universities
- ♦ Access to role models from the world of work, in particular the retail and logistics sector
- ♦ An opportunity to mix GCSEs and A levels with a more relevant and practical style of learning

The Diploma in Retail Business covers a broad range of topics, including:

- ♦ **Retail operations:** Looks at sourcing products,
- ♦ **Merchandising, stock control, selling and customer service.**
- ♦ **Business management:** Looks at marketing, strategies for change, HR and team dynamics.
- ♦ **Supply chain:** Looks at the journey of a product from its source through transportation and storage to disposal, including recycling.
- ♦ **Creative and design:** Explores store layout and visual merchandising.



Embedded throughout these topics are essential skills and knowledge like engaging with people, technology, business administration skills, and safety and security, as well as wider issues such as globalisation, sustainability, and ethical and environmental considerations.

The Diploma in Retail Business can give you the skills to go on to university or further education. It also allows you to take up one of the vast range of jobs, roles and occupations that retail has to offer - and carry on your training at work, perhaps with an Apprenticeship.

You may not know exactly what you want to do now, which is why the Diploma won't narrow your options but will give you a great grounding in the skills demanded by employers and universities.

RETAIL BUSINESS DIPLOMA

You may not know exactly what you want to do now, which is why the Diploma won't narrow your options but will give you a great grounding in the skills demanded by employers and universities.

The Retail Business Diploma will be available at Levels 2 and 3. This will involve some study based at school but will also include off-site study at other schools, colleges and training centre's. There will also be a period of work experience included within the Diploma at both levels. *(Exact details of delivery of the Diploma will vary according to level studied; more details are available from school).*

To find out more about the Diploma in Retail Business, speak to your teacher or careers adviser.

You can also find more information about Diplomas on these websites:

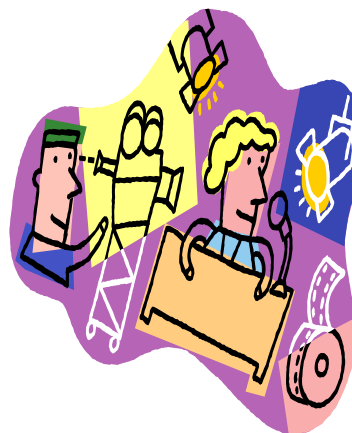
www.direct.gov.uk/diplomas
www.connexions-direct.com
www.diplomainretailbusiness.com



CREATIVE MEDIA DIPLOMA

The Creative and Media Diploma is a Level 2 Applied Learning Course, which combines traditional aspects of the academic curriculum with lots of practical "hands on learning".

The diploma which was launched in September 2009, is worth 7 GCSEs at A*-C and incorporates aspects of:-



Drama
Music
Art
English

- ◆ Industrial partners have been involved in designing the course and were possible assist in its delivery.
- ◆ The two year course is split into **Seven Modules** which encompass elements of creativity, media and creative media.
- ◆ The course is open to students from the Liverpool East Collaborative. Girls opting for this course will spend 1½ days a week at Holly Lodge, and will be taught by a combination of Holly Lodge and Broughton Hall staff.

If you wish to know more about this course please see **Miss Hayes or Mrs Hayward.**

INFORMATION AND GUIDANCE

In addition all students will have access to The Information and Guidance Programme within the curriculum which prepares students for adult and working life in the 21st Century. The provision, in partnership with **Connexions**, helps students to manage their own pathways through learning and work. It promotes the knowledge and understanding, skills and values which enable students to learn about themselves and their capabilities, to research the opportunities available to them and make plans to achieve their goals. Equality of opportunity underpins the programme and reflects the specific additional needs of particular groups of students such as those with learning difficulties and/or disabilities, the disaffected and highly able. The provision is in the form of additional discrete activities and integrated activities across the curriculum with other subjects. A mentoring scheme operates to give students extra help and guidance to plan strategies to reach their goals and achieve success.

Opportunities to find out about the world of work can be experienced during visits to specific events e.g. **Careers In Engineering, Construction, Festival of Skills** and a two week **Work Experience** entitlement. **Enterprise Days** with visiting speakers, enhance curriculum provision. Drama groups, e.g. **HE4ALL**, give presentations to inform and entertain.

The Careers Library is electronically stored on the computer network which has the latest software installed, e.g. Kudos, Keyclips, CID, Pathfinder and HE.

For choosing courses post 14 & 16 visit www.i-chooseliverpool.org.uk and current vacancies on www.connexionslive.com.

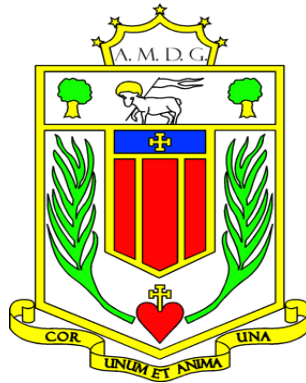
Students can e-mail directly our Connexions Personal Advisors ~

Karen.Meagher@connexionslive.com and Claire.Sorenson@connexionslive.com.

Skills are developed through a variety of activities, eg mock interviews take place in Year 10 which involve students preparing the relevant documentation and being interviewed by a personnel manager from industry. **All students in Year 11 are entitled to an interview with a Connexions Personal Advisor and senior management meet with parents and students to discuss their progress and options at the end of KS4.**

NOTES





**Broughton Hall High School
Technology College**

Yew Tree Lane
West Derby
Liverpool L12 5HJ

Phone: 0151 228 3622
Fax: 0151 228 1980
Email: admin@broughtonhall.com
Website: www.broughtonhall.com

