

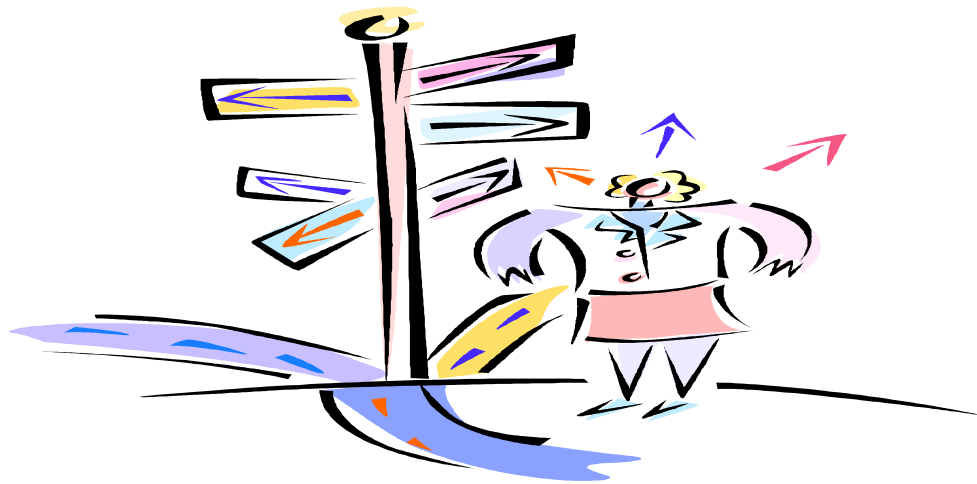


ELECTIVES

National Curriculum

Key Stage 4

2011 ~ 2013



INDEX

Page No.	Description
3 - 4	Introduction
5	Key Stage 4 Electives
CORE SUBJECTS	
6	English Language
7	English Literature
8	Mathematics
9	Science
10	Applied Science - Btec Extended Certificate
11	French - GCSE
12	French - NVQ Business
13	Religious Studies
14	P.E.
15	P.S.H.E.
16	ASDAN
ELECTIVES SUBJECTS	
17	Art & Design - Btec Level 2
18	Business Studies
19	Dance
20	Drama
21	Geography
22	Health & Social Care
23	History
24	ICT
25	Music
26	Spanish GCSE
27	Physical Education
28	Sport - Btec First Certificate
TECHNOLOGY OPTIONS	
29	Food Technology - GCSE
30	Catering - GCSE
31	Graphic Products
32	Resistant Materials
33	Textile Technology
34	Art & Design - Btec Extended Certificate - Textile Focus
35	Art & Design - Btec Extended Certificate - Graphics Focus
36	Information & Guidance
37-38	Notes pages

INTRODUCTION

KEY STAGE 4

This academic year has seen the first cohort of Year 9 pupils working towards a Creative Minds Diploma.

The aim of this diploma was to make your learning more relevant and to prepare you for the decisions you now have to make regarding your studies at KS4. We hope the diploma has given you the opportunity to recognise your areas of individual interest, abilities and strengths, so that you can now make informed decisions about your future with guidance from your teachers and parents.

Since coming into office the Coalition Government has set out its aspirations for education. The National Curriculum is under review and a consultation process is underway which will determine the future direction of educational policy.

One new development, which parents may have heard something of in the press, is the **English Baccalaureate**. It is proposed that the **E.Bac** will be awarded to students who are awarded five A*-C GCSEs in English, Mathematics, a Science, a Foreign Language and a Humanity. Currently however, there is debate about which subjects will qualify for inclusion.

Michael Gove, Education Secretary has stated that at this time "the key performance measure remains the number of children who get five A*-C passes at GCSE including English and maths."

Since Broughton Hall's KS4 curriculum model already affords students the opportunity to study English, Mathematics, Science as well as Humanity and a Foreign Language; we have decided not to alter our curriculum model at this point.

The decisions you make will help to develop your individual interests and abilities.

In making your choices you should consider:

- **Which subjects interest you most?**
- **If you have the ability to succeed in these subjects?**
- **Does the assessment style of these subjects suit you as a learner?**
- **How will this choice of subjects impact on future career choices? Will doors be closed to you?**
- **Have you made a personal decision or have you been influenced by friends' choices?**



Read this booklet carefully and seek out the guidance of staff and parents. In making your choices you need to be aware that some subjects are only open to a limited number of pupils.

If a subject is oversubscribed, ability in that subject and attitude to work, as well as attendance will be taken into consideration when selecting pupils.

Equally, if the number of pupils for a particular subject is low, the class will not be offered.

Mrs Grant, Deputy Head Teacher, is happy to deal with any queries regarding the Curriculum.

KEY STAGE 4 ELECTIVES ~ 2011 - 2013

In years 7-9 all pupils studied the same subjects as required by the National Curriculum. During years 10 and 11 some subjects are still compulsory but others are optional.

THE CORE

These subjects are compulsory. They include:-

RE
English Language & Literature
Mathematics
Science or Science with ICT
French or Asdan
Tehcnology
General PE
Careers Education and Guidance
Personal, Social, Health and Economic Education (PSHE)

The **Electives System** is made up of pathways and free choices. There are two main pathways.

Traditional Applied

Elective Subjects

ICT*	Business Studies*
Spanish	Art & Design*
History	Dance
Health & Social Care*	Drama
Geography	Music
Technology*	
Physical Education*	

***Applied subjects available**

The Traditional Pathway

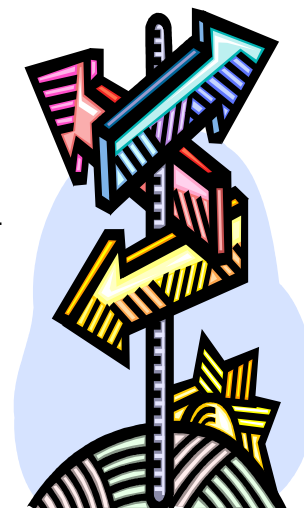
This pathway is for pupils who want to study a broad range of subjects. The majority of pupils will follow this pathway. Pupils will be required to study French and a technology subject, in addition to choosing **two subjects** from the Electives.

The opportunity to study ICT after school exists. Only a limited number of places exist in these After School Classes, and these will be offered on the basis of ability and aptitude. Careful consideration will be given to the impact of this additional workload on a pupil's ability to succeed at Key Stage 4.

The Applied Pathway

Between 50-60 pupils are likely to select this pathway. It is for those students who enjoy a range of subjects. They are likely to prefer a more practical, hands on approach to learning and benefit from continuous assessment/coursework rather than end of module examinations.

Pupils are able to select **one technology** subject and **two applied subjects**.



CORE SUBJECTS

ENGLISH LANGUAGE

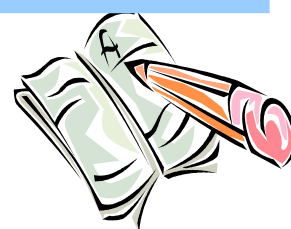
EXAMINATION/CONTROLLED ASSESSMENTS

AQA

Higher Foundation

Possible grades A* - D
Possible grades C - G

Written Examination	One exam - non fiction reading & writing	40%
Controlled assessments	Spoken Language Study Extended reading Producing creative texts Understanding creative texts	40%
Speaking & Listening	Three tasks	20%



In order to give pupils the maximum opportunity of achieving success in the examination, all pupils will be entered for GCSE English in Year 10. They will have four lessons of English a week. To deliver the course and prepare pupils for the examination they will start their coursework in Year 9 from May. The focus of this will be a Spoken Language Study. The reading and writing controlled assessments will be completed by the end of the Autumn Term in Year 10. Preparation for the exam will begin in January.

There are two exam entry opportunities, which will provide the possibility of re-sit if necessary.

The early entry programme has proven extremely successful with over 80% of the current Year 11 already achieving a C or above in their GCSE.

COURSE DESCRIPTION

Controlled Assessments:

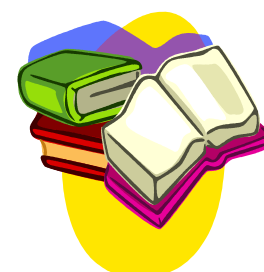
These are assessments that pupils will work towards in school. They will be given specific time, during lessons, to complete these tasks. These tasks contribute to the overall GCSE grade. This replaces coursework.

Writing and Reading Tasks:

- Producing two creative tasks
- Understanding two creative tasks

All pupils will continue with English Literature in Year 11 and have 3 lessons a week.

For some pupils it may be necessary to also attend Study Support lessons, in addition to GCSE English, in order to make better progress. Study is designed to improve literacy standards, to give additional support and will be taught by an English specialist.



For further information on this qualification please contact: **Mrs K Poulton**

ENGLISH LITERATURE

EXAMINATION/CONTROLLED ASSESSMENTS

AQA

Higher Possible grades A*-D
Foundation Possible Grades C - G

Written Examinations	Poetry exam	35%
	Modern texts exam	40%

Controlled Assessments Shakespeare & Literary Heritage linked piece 25%



COURSE DESCRIPTION

Pupils will study a selection of poems from a poetry anthology. Pupils will study a Shakespeare Play, a text from the Literary Heritage and a text from other cultures and traditions. They will sit two exams.

Controlled Assessments:

Pupils will write a linked piece on a Shakespearean play and a text from the Literacy Heritage. This will be produced as a controlled assessment, during lesson time. This will contribute to the overall Literature grade.

Examinations:

Unit 2 exam will be on poetry and Unit 1 exam will be assessing pupils on a modern prose or poetry text from the Literacy Heritage and a text from other cultures and traditions.

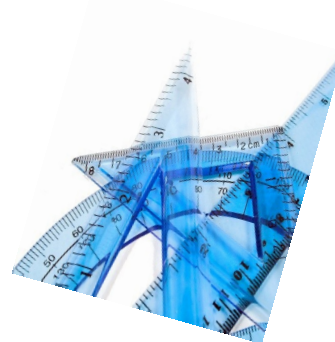
Pupils are allowed to have their texts with them in the examination, the emphasis being on thoughtful personal response rather than memorised quotations and notes.

For further information on this qualification please contact: **Mrs K Poulton**



MATHEMATICS

EXAMINATION: MATHEMATICS NEW SPECIFICATION 2010
EDEXCEL : Specification Module B (www.edexcel.org.uk)
Course code: ZMB01



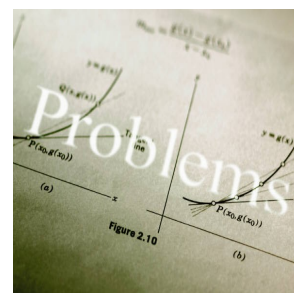
Higher	Possible grades A*-D (with E allowed)			
Foundation	Possible grades C - G			
Year 10 Probability	November	Unit 1	30%	Statistics and
Year 10 Geometry 1	June	Unit 2	30%	Number, Algebra,
Year 11	June	Unit 3	40%	Number, Algebra, Geometry 2

COURSE DESCRIPTION

Examinations available March, November and June.

Content The following Attainment Targets are studied.
 The degree of difficulty varies depending upon the level.

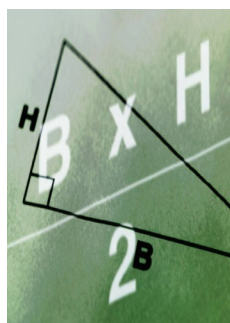
- AT1 Using and Applying Mathematics. These activities will include practical, problem solving and investigational work.
- AT2 Number and Algebra. Use of number, including estimation and approximation, interpreting results and checking reasonableness. Use of symbolic and graphical representation to express relationships.
- AT3 Shape and Space. Use the properties of 2-D and 3-D shapes and use measurement, location and transformation in the study of space.
- AT4 Handling Data. The collection, processing and interpretation of data. Estimating and using probabilities.



* Specimen papers/past examinations papers are available on the website: www.edexcel.org.uk

Method

The pupils are taught in sets, each pupil studying the course most suited to her ability. All pupils are given every opportunity to reach their potential in mathematics and will be taught by specialist mathematicians.



During the two years students will develop their knowledge, skills and problem solving techniques in a variety of ways, leading to increased confidence in their application of mathematics.

Early entry for some groups at Foundation level. This will provide additional flexibility in Year 11.

For further information on this qualification please contact: **Mr M Tollitt**

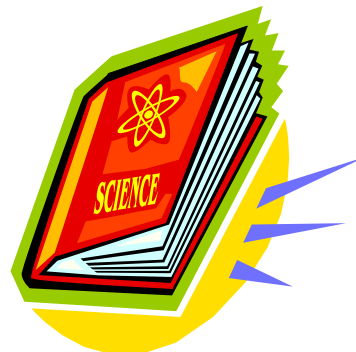
SCIENCE

EXAMINATION / PRACTICAL ASSESSEMENTS

SCIENCE

COURSE DESCRIPTION

- 2 GCSEs offered namely Core Science **examined** during Year 10, Additional Science **examined** during Year 11.
- Both GCSEs will be offered at:
Higher A* - C
Foundation C - G
- There will be an internally assessed components which will represent 25% of the total assessment.
- Balanced Science GCSEs covering topics in Biology, Chemistry and Physics.



Method

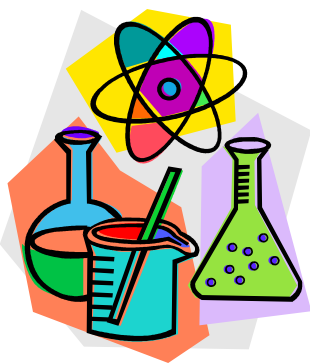
The aim is to provide all pupils with a balanced science course which includes the major concepts, principles and applications of Biology, Chemistry and Physics.

It is hoped that students will become confident in a technological world, will recognise the usefulness and limitations of scientific methods and will be encouraged to take on further studies in Science.

This we hope, will be achieved by following a course aimed at active pupil participation, backed up by consistent hard work and regular completion of homework.

Progression

Learners are able to progress onto GCE A Levels in Biology, Chemistry, Physics or Science, Engineering or Technology related courses.



For further information on this qualification please contact:
Mr M Brierley.

BTEC EXTENDED CERTIFICATE IN APPLIED SCIENCE

EDEXCEL : BTEC FIRST CERTIFICATE



- ♦ Work related qualification
- ♦ Alternative practical based learning
- ♦ Equal to 2 GCSEs
- ♦ 100% internally assessed via Portfolio
- ♦ Balanced Science covering work related topics in Biology, Chemistry and Physics

- ♦ Grading system of

Pass	2 grade C GCSE's
Merit	2 grade B GCSE's
Distinction	2 grade A GCSE's

Candidates for whom a vocational approach is more appropriate will take BTEC Science, such students are likely to have achieved a Level 5 in Science at KS3

Method

The aim is to encourage and develop science vocational skills, where learners simulate or towards the role of being employed as an assistant practitioner / technician during their coursework.

Teaching strategies reflect the nature of work within science-based industries, using a series of assignment and activities encouraging learners to take responsibility and ownership for their learning.

Progression

Learners may progress to GCE Applied Science or a BTEC National in Applied Science or enter employment.

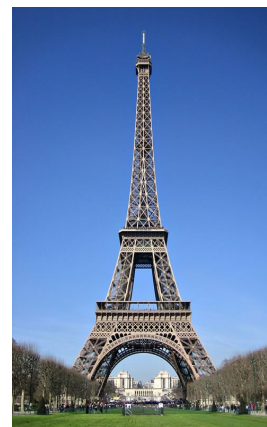
For further information on this qualification please contact: **Mr M Brierley**



GCSE FRENCH

EXAM BOARD: EDEXCEL

As you've studied French at Key Stage 3 you're well prepared to do a GCSE course in this language! You already know a lot of the vocabulary and grammar you'll need for GCSE. You know how to talk about yourself, your family and friends, your hobbies, where you live, school, holidays, food and drink. You'll build on these topics during your GCSE course, as well as moving on to new topics.



HOW WILL I BE ASSESSED?

Speaking and Writing

In Speaking and Writing, you and your teacher will choose when during the course you do your assessment, so you only do it when you are completely ready. For the speaking part, your teacher will assess you. You will carry out two activities from the following:

- An open interaction; this will be like a non-scripted play and could relate to a transactional situation.
- A discussion with your teacher about a photo or picture that you have brought in of something personal to you.
- A short presentation about something that interests you.

For the writing part, Edexcel will assess you. You will complete 2 writing tasks in class, for example an article for a magazine, a web page, a blog, or a letter.

The speaking is worth 30%.
The writing is worth 30%.

Bonjour

Listening and Reading

Listening and Reading are both assessed by exam papers in June Year 11. You can take either a Foundation Tier or Higher Tier paper in each skill.

In the reading test, you will answer questions about short texts on different topics, for example text messages, advertisements and emails.

The listening is worth 20%.
The reading is worth 20%

WHAT CAN I DO AFTER I'VE COMPLETED THE COURSE?

People with language skills and knowledge are highly thought of in the modern world. They stand out as talented and successful people, with broad and exciting horizons! Taking GCSE French means you will:

- have much more fun when travelling to a French speaking country
- be able to study AS and A2 French courses
- add an extra dimension to your personal skills profile which will impress anyone who reads your CV
- be in a stronger position to get a job in companies with international links or to work abroad.

NEXT STEPS!

Visit websites, such as the Edexcel website (www.edexcel.com/gcse2009/mfl)
Continue to work hard in your current French studies!

Merci

For further information on this qualification please contact: **Mrs B Davies**

NVQ BUSINESS FRENCH

EXAM BOARD: OCR

Following the trend towards alternative and vocational language qualifications, the introduction of the NVQ pathway in schools is on the increase. The NVQ is a portfolio, assessment based qualification which is accessible to all abilities and is highly flexible by nature.



In Year 9 certain groups embarked upon the NVQ qualification and by the end of this academic year will have completed Level 1. They will then build on this over the next two years as they prepare their Level 2 qualification. By offering this qualification all Broughton Hall pupils are being given the opportunity to gain a qualification in a foreign language, something that is highly desirable in our global economy where 94% of the world's population do not have English as their first language and 80% do not speak it at all!

Level 2 NVQ is comparable to Grade B at GCSE.

It is achievable in that there is **NO** exam!

- Small, manageable, predictable assessments
- Pupils can use reference materials
- Pupils can have another go at assessments until they achieve them
- Feedback guides pupils
- Pastoral environment

The benefits of learning modern foreign languages are manifold. Those who take advantage of learning a second language have a distinct edge over those who do not. As well as possessing a greater linguistic understanding and a wider cultural appreciation, the ability to speak secondary languages is professionally desirable as well.

Knowing a second language can be advantageous within the world of work by opening up **additional job opportunities**. It is estimated that workers who speak more than one language are likely to be **paid an average of £3000 more** than those who do not (*Radio One*, 2004). Similarly, learning another language has great academic value, since it promotes **creativity, self-expression, problem-solving skills and literacy** (including in the mother tongue).

Individuals who speak and read more than one language have the ability to **communicate with more people, read more literature, and benefit more fully from travel** to other countries. Introducing students to alternative ways of expressing themselves and to different cultures gives **greater depth to their understanding of human experience** by fostering an appreciation for the customs and achievements of people beyond their own communities.

In conclusion, second language study offers many benefits to students in terms of **improved communicative ability, cognitive development, cultural awareness, and job opportunities**. Society as a whole also profits **economically, politically, and socially** when its citizens can communicate with and appreciate people from other countries and cultures.

For further information on this qualification please contact : **Mrs B Davies**

RELIGIOUS STUDIES

EXAMINATION

Edexcel Specification A
Single Tier

Unit 3 (Year 10)
Unit 8 (Year 11)
Possible grades A* - G

Examination 100%

Examination at the end of each unit.



COURSE DESCRIPTION

Content

Unit 3: Religion and life based on a study of Catholic Christianity

There are four modules within this topic:

- Religion and Community Cohesion
- Marriage and Family Life
- Matters of Life and Death
- Believing in God

Unit 8: Religion and Society based on a study of Christianity and at least one other religion.

There are four modules:

- Religion: And Society
- Religion: Environmental and Medical Issues
- Religion: Peace and Conflict
- Religion: Crime and Punishment



Method

Pupils are taught in sets appropriate to their ability. The sets are determined by outcome of continuous assessments in Key Stage 3, consultations with colleagues in RE and other subject areas. Lessons are blocked to facilitate movement between sets as necessary.

Pupils will be entered for the most appropriate examination :

- Full GCSE
- Short GCSE
- Entry Level GCSE

There are many and varied careers that RE supports. Careers which are involved with business, medicine, administration, youth work, social work, teaching, working with young and the elderly, personnel and sport - to name but a few. Any career which involves working with people - team building, problem solving, management and the use of empathy would benefit from a GCSE qualification in RE.

For further information on this qualification please contact: **Ms M Canny**

PHYSICAL EDUCATION

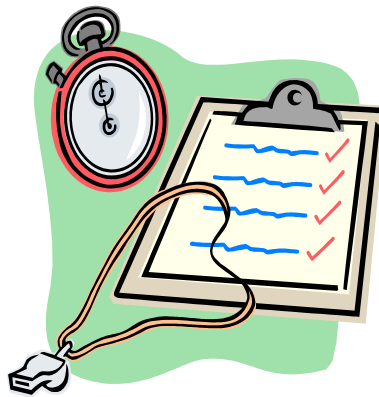
In Key Stage 4 all students take Core PE. This is a non-examination subject. The aim is to improve and refine students skills in a range of chosen activities.

Targets include:

- Enhanced knowledge and understanding of chosen activities
- Competency and increased confidence in officiating and coaching
- Increased evaluation skills

The programmes of study challenge students both physically and intellectually. The desired outcome is that students become effective performers, well-informed observers and knowledgeable leaders and officials.

For further information on this qualification please contact: **Mrs K Crummey**



PSHE : PERSONAL WELLBEING / FINANCIAL MANAGEMENT

The personal wellbeing and financial management curriculum deals with many real life issues that young people face as they grow up.

It provides the knowledge, skills and attributes students need to lead safe, healthy, responsible, fulfilled lives as confident individuals and members of society. Students learn about businesses, different types of work, how to manage money and budget.

PSHE education enables school to promote the well-being of students, provide advice and guidance on a variety of issues from relationships, healthy lifestyle, enterprise, citizenship to careers and work related learning.

For further information on this qualification please contact: **Ms A Roberts**



ASDAN - Certificate of Personal Effectiveness (CoPE)

CONTINUAL ASSESSMENT

QCA

Level 2 ~ equivalent to GCSE Grade B—46 points
Level 1 ~ equivalent to GCSE Grade E/F—25 points

COURSE DESCRIPTION

Students build up a portfolio of evidence as they complete the various challenges and gain 'credits' for each module finished. When they have gained enough credits, their portfolio is presented at a moderation meeting and students receive CoPE.



Approximately 120 hours of work is expected for the qualification. Students are required to plan and reviews form part of the portfolio of evidence.

CoPE Level 1

Students select a number of 'challenges' from the 12 modules that make up CoPE Level 1.

1. Information Handling
2. The Community
3. Sport and Leisure
4. Home Management
5. The Environment
6. Number Handling
7. Health and Safety
8. World of Work
9. Technology
10. Wider World
11. Expressive Arts
12. Belief and Values



CoPE Level 2

Is for pupils progressing beyond Level 1, it can offer an excellent bridge between Key Stage 4 and Post 16. Students select a number of challenges from the 12 modules that make up CoPE Level 2.

1. Information Handling
2. The Community
3. Sport and Leisure
4. Independent Living
5. Economic and Consumer Issues
6. Handling Numbers
7. Healthy Living
8. Work Related Activities
9. Science and Technology
10. International Links
11. Expressive Arts
12. Belief and Ethics



For further information on this qualification please contact: **Mrs S Reid**

ELECTIVE SUBJECTS

BTEC LEVEL 2 EXTENDED CERTIFICATE ART & DESIGN

EXAMINING BOARD: EDEXCEL
EQUIVALENT TO 2 GCSES A* - C

This is a vocational qualification and projects are based on work related scenarios in order to give students an insight into the process of working to design briefs, developing and building upon skills acquired at KS3.



BTEC qualifications are recognised by schools, colleges, universities and employers across the UK and in over 100 countries worldwide. The BTEC allows students to move on to higher level qualifications in Sixth Form or at Colleges of Higher Education.

BTEC Art and Design consists of 3 Units:

- Unit 1 Contextual References in Art & Design
- Unit 2 2D Visual Communication
- Unit 3 3D Visual Communication
- Unit 14 Working with 3D Design Craft Briefs

The assessment process is ongoing throughout the 2 year course.

Projects are graded as:-

Pass (2 C's) Merit (2 B's) Distinction (2 A's)

100% coursework based.

*Although this is mainly a practical course, there is a written element and students would be expected to write about their own work and influences of artists and designers, relevant to the projects being studied.

For further information on this qualification please contact: **Ms L Mackey.**



BUSINESS STUDIES

Business Studies looks at the business world from the point of view of the business person – the entrepreneur. Students will study a range of topics that relate to the real world and which will be of use to them in their future lives.



For example, you will:

- ♦ Learn about how firms recruit and select employees. This will help you when you are trying to find employment.
- ♦ Find out about the importance of Trade Unions in the workplace.
- ♦ Find out why exchange rates are important to British businesses and why a strong Pound can affect British jobs.
- ♦ Examine different types of business organisations. For example, you will find out why Man Utd has PLC after its name while Everton has Ltd. after its name.
- ♦ Find out why many firms prefer to locate their business in the South-East of England rather than Liverpool and also what the Government tries to do to prevent this from happening too often.
- ♦ Learn about your Employment Rights when you apply for or find a job.
- ♦ Find out why it is that large organisations such as Asda can afford to sell their goods at a much lower price than a 'corner shop' and examine the factors that lead to the continued survival of small shops.
- ♦ Examine ways in which companies try to motivate their staff in order to help make the business a success. You will also learn how your wage packet is calculated and what deductions are taken from it each month.

Pupils choosing to study Business Studies will be selected to follow a course of study based upon their ability and learning style. Two options will be available to students:

OCR GCSE Business Studies – This OCR GCSE is aimed at more able students and consists of three units:

Unit 1: Marketing and Enterprise (25%)

Unit 2: Business and People (25%)

Unit 3: Production, Finance and External Business Environment (50%)

Unit 1 is an internally assessed controlled assessment task, Unit 2 is an externally assessed unseen exam and Unit 3 is an external exam based upon a pre-released case study.

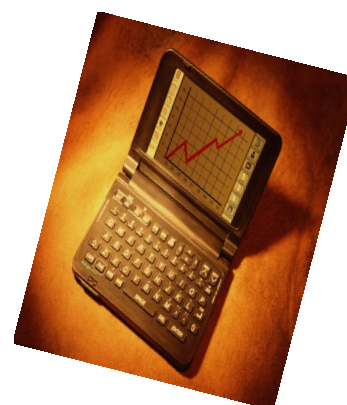
OCR Level 2 National Award in Business – This is a vocational course that is equivalent to two GCSEs. It is assessed entirely through the completion of coursework and consists of 3 units:

Unit 1: Investigating Business

Unit 2: Communication in Business

Unit 3: Keeping Customers Happy

Pupils taking this course will develop their ICT, numerical and communication skills. They will investigate real businesses, collecting, analysing and interpreting information and presenting results in a variety of ways e.g. reports, presentations and role plays.



For further information on this qualification please contact: **Mr F Lawell**

DANCE

EXAMINATION / PRACTICAL ASSESSMENT

AQA (syllabus 4230)

Single Tier Possible grades A* - G

Examination:

Written	20%
Set Study	20%

Assessment

Performance in a duo or group	20%
Choreography ~ Solo	15%
Group Choreography	25%



COURSE DESCRIPTION

The course demands that:

1. Pupils have a background of knowledge & experience of Dance.
2. Pupils are fully committed to the subject as pupils free time is often called upon for rehearsals for compositions and performance assessments.
3. Pupils will attend dance theatre trips that are crucial to the course content.
4. Pupils are willing to meet the written and theory work demands that accompany the practical elements of this course.
5. External training in dance is a requirement.

The aims of this course are to:

- ◆ Develop understanding and appreciation of a range of dance styles ~ ballet, contemporary, jazz and tap.
- ◆ Develop the knowledge, skills and understanding needed to perform and appreciate dance.
- ◆ Develop life-skills including decision making, critical and creative thinking and the ability to co-operate with others.
- ◆ Develop understanding and knowledge on Health and Safety, Physical setting, accompaniment, choreographic and performance skills.
- ◆ Pupils must have the skill and confidence to perform and choreograph a solo dance
- ◆ Street Dance will not feature in the course nor will it equip the pupils with skills required to gain a good GCSE grade.
- ◆ Looking at a range of Dance works - Ballet, Jazz, Contemporary - developing analysis & appreciation, skills of action, space, dynamics, relationships, set, light, accompaniment and theme.

For further information on this qualification please contact: **Ms K Crummey**

DRAMA

CONTROLLED ASSESSMENT / VISITING EXAMINER

EDEXCEL Specification

COURSE DESCRIPTION

There are 3 units:



1.	Exploring Drama in a practical way with a controlled Assessment and written commentary	30%
2.	Exploring Play Texts focusing on characters, interpretations of plays and design implications - with a Controlled Assessment and written commentary.	30%
3.	Drama Performance - devised or scripted / play - performance to an audience including a visiting examiner	40%

During the course you will be given opportunities to attend live theatre performances. This is an essential part of this course.

ARE YOU, OR COULD YOU BE? :

- Confident in standing up in front of an audience and performing in public?
- Confident in your ability and willingness to not be self-conscious and embarrassed in front of your peers and adults?
- Excited at the thought of "losing yourself" in another character in devised or scripted drama?
- Willing to work collaboratively and creatively in putting a production together
- Ready for the sheer hard work and discipline that are required for rehearsals and performances?
- Someone who has an excellent attendance record, as much of the work is done in groups.

If your answers to these questions are **YES** ~ This could be the course for you.

WHY DRAMA?

Drama is a subject that helps build self-confidence and promotes team work. It is useful for a number of careers, particularly those which involve interpersonal communication skills.

For further information on this qualification please contact: **Mr M Mangan**

GEOGRAPHY

EXAMINATION/ CONTROLLED ASSESSMENT

EDEXCEL Specification B

Higher	Possible grades A*-D
Foundation	Possible grades C - G
Examination	75% (3 papers)
Controlled Assessment	25% (One piece of coursework)



This is a Modular exam course taken over two years

EXAM PAPERS

- Paper 1 and 2 contain short structured questions.
- Paper 3 is decision making. You will have an information book in class, which you can take into the examination.

COURSE DESCRIPTION

Almost any day of the week there are geographical stories in the news on migration, earthquakes, or climate change and the world we live in is changing very rapidly. Geography will help you understand and explain these issues.

The course contains lots of short topics, such as earthquakes and volcanoes, choosing places to live, energy supply, natural environments, world of work and many more

You will have to produce just one coursework project. This requires you to do some fieldwork. In recent years we've been to the Peak District, to Ormskirk and to Liverpool City Centre and Freshfield.

The exam itself consists of structured, short and medium length questions, and you have some choice in which questions you answer.

GEOGRAPHY LESSONS

In Geography GCSE we use lots of different classroom activities. This will include lots of oral work such as presentations and drama, we watch videos, do group research projects, and map work. We also use thinking skills activities such as mysteries and card sorting and you can go outside on field visits to continue your study.

Through studying Geography GCSE you will improve lots of important skills. You will be able to do the following: handle data, make decisions, analyze material, write reports, use computers, carry out practical fieldwork, solve problems. You will have a good knowledge of places in the world.

Whatever your plans for the future, the skills and knowledge of the wider world that you will gain through Geography will be valued by colleges and employers. Geography also combines well and has overlaps with many other subjects including Business Studies and Science.

For further information on this qualification please contact: **Mrs J Hitchmough**

HEALTH AND SOCIAL CARE

ALL MODULES ARE AWARDED THROUGH INTRNAL ASSESSMENT WITH EXTERNAL VERIFICATION.

OCR Nationals (Level 2)

A 3 Unit course of study leading to the equivalent of two GCSE A* - C if all tasks are successfully completed.

Course Description

The OCR Nationals (Level 2) provides students with insight into communication, caring and first aid.

The qualification provides students with skills, knowledge and understanding of the area and contributes to the development of career opportunities in both the Health Sector and the Social Care Sector.

Successful students can move onto level 3 courses in Sixth Form.



UNIT	TITLE	ASSESSMENT
2	Communicating with Service Users	Internal Assessment
3	Practical Caring	Internal Assessment
11	Practical First Aid	Internal Assessment

For further information on this qualification please contact:

Mrs West, Mrs Graham or Ms Tickle.

HISTORY

EXAMINATION/ CONTROLLED ASSESSMENT

AQA Specification B

Single Tier	Possible grades A* - G
Examination	75%
Controlled Assessment	25%



COURSE DESCRIPTION

Modular Course

Unit 1 The origins of the Cold War 1945—1955. Exam at end of Year 10.

Unit 2 In depth studies of the 20th century- examining different forms of government in Russia, American Civil Rights and the war in Vietnam.

Unit 3 Historical Enquiry ~ Controlled Assessment ~ On an aspect of British History ~ supplemented by residential site visit to France/ Belgium.

Aims of Course

- ♦ To stimulate interest in and enthusiasm for the study of the past.
- ♦ To promote understanding of links between the past and the present.
- ♦ To develop essential study skills including:
 - Knowledge and understanding of history
 - Interpretations of history
 - The use of historical sources
- ♦ To provide a sound basis for further study and pursuit of personal interest.
- ♦ To provide candidates with an understanding of some of the major issues of the modern world.



Teaching/ Learning methods

- ♦ The pupils will be taught in ability sets.
- ♦ A wide variety of teaching methods and materials will be used.
- ♦ Self study skills will be developed.

Pupils will have access to a very wide range of historical source material and evidence including books, newspapers, eye-witness accounts, newsreel footage, video and audio tapes plus site visits.

GCSE History is a highly regarded academic subject which employers in all careers like to see as it shows that you have highly developed skills of research, analysis and comprehension which can be applied in any area of life.

GCSE History can lead you on to the study of A Level or Degree level History which opens the door to many high earning careers e.g. Law, Journalism, Media, tourism (Heritage), Marketing, Politics, Armed Services.

For further information on this qualification please contact: **Mrs L Fielding**

ICT ~ OCR LEVEL 2 NATIONALS IN ICT

The **OCR Level 2 Nationals in ICT** have been developed to provide candidates with an introduction to the skills, knowledge and understanding required to prepare for work in the information and communication technology sector. They have also been designed to help candidates develop their personal skills in the areas of team working, career planning, communication and problem solving. They accredit candidates' ability to carry out a range of tasks and have been designed to accredit candidates' achievements in a modern, practical way that is relevant to the workplace.

The OCR Level 2 Nationals in ICT are qualifications that have been accredited by the QCA to the National Qualifications Framework.

Qualification Structure

Students will be entered for the full OCR Level 2 National First Award in ICT. To achieve this, students must complete the mandatory unit (Unit 1), plus 2 other optional units. Hence, students must complete 3 full units.



Unit 1 – ICT Skills for Business (mandatory unit)

The main elements of this unit are:

- AO1 – Demonstrate good working practices with files, folders and subfolders.
- AO2 – Use of internet for searching and selecting information. Use of email.
- AO3 – Produce a PowerPoint presentation.
- AO4 – Use Publisher to create a range of business documents.
- AO5 – Create a spreadsheet.
- AO6 – Use a database.

The remaining 2 optional units will be chosen from the following: webpage creation, digital imaging, design and production of multimedia products, desktop publishing, spreadsheets, databases, e-commerce, customer support, planning and supporting telecommunications, career planning, work experience, IT systems and user needs, installation of applications, system testing and maintenance, repair and decommission of IT equipment, CAD / CAM and application of computer control.

This will provide students with the opportunity to achieve a merit or distinction in this unit.

Assessment

All units are centre assessed and externally moderated by an OCR Visiting Moderator. All units and full awards are graded Pass, Merit and Distinction.

Progression Routes

Progression into employment: These qualifications are designed to enable candidates to enter employment at operative or trainee level within a wide range of business environment. Such candidates would normally enter employment through a work related training programme.

Progression to further qualifications: These qualifications have been designed to aid progression to GCE or GCE Applied ICT. They will also provide a basis for progression to other qualifications at Level 3 of the National Qualifications Framework.

For further information on this qualification please contact: **Mr T Wilkinson.**

MUSIC

Areas of Study:

1. Western Classical music 1600-1899
2. Music in the 20th Century
3. Popular music in context
4. World Music



Unit 1 (Coursework & Examination): Performing Music (30%)

Perform 2 pieces (one solo, one ensemble) on chosen instrument/voice.

Solo Performance	15%
Ensemble Performance	15%

Unit 2 (Coursework & Examination): Composition (30%)

2 compositions, written to a set brief, each inspired by one of the four **Areas of Study**.

Unit 3: Examination: Listening (40%)

A 90 minute written paper containing questions based on 3 set works from each of the above **Areas of Study**: 12 works in all.

Music GCSE is a highly academic course, as well as stretching students' performance and creative skills. There is much scientific evidence to suggest that studying Music improves students' brain function and so benefits their overall learning, not only in Music, but across their academic studies.

*Students are required to sing or play an instrument and must **rehearse daily** in order to reach the required standard. Students who do not play an instrument are strongly advised to have lessons in either guitar, piano/keyboard or voice. Broughton Hall subsidises the cost of instrumental lessons and parents make a contribution (£75.00 per term) towards them. Where severe cases of financial hardship exist, the School aims to support talented students who wish to study GCSE Music. For further information, please speak to Miss Hayes.*

Students must have an **open mind to different kinds of music** & be willing to take part in a variety of musical activities. GCSE students **MUST** join at least one of the school's extra-curricular music activities (e.g. choir, vocal group, band) in order to prepare them from the Ensemble Performance Exam, which assesses their ability to play with others

For further information on this qualification please contact: **Ms S Hayes**



GCSE SPANISH

EXAM BOARD: EDEXCEL

If you've studied Spanish at Key Stage 3 and are in **9B1 or 9H1**, you're well prepared to do a GCSE course in this language!

You already know a lot of the vocabulary and grammar you'll need for GCSE. You know how to talk about yourself, your family and friends, your hobbies, where you live, school, holidays, food and drink. You'll build on these topics during your GCSE course, as well as moving on to new topics.



How will I be assessed?

Speaking and Writing

In Speaking and Writing, you and your teacher will choose when during the course you do your assessment, so you only do it when you are completely ready. For the speaking part, your teacher will assess you. You will carry out two activities from the following:

- An open interaction; this will be like a non-scripted play and could relate to a transactional situation.
- A discussion with your teacher about a photo or picture that you have brought in of something personal to you.
- A short presentation about something that interests you.

For the writing part, Edexcel will assess you. You will complete 2 writing tasks in class, for example an article for a magazine, a web page, a blog, or a letter.

The speaking is worth 30%.
The writing is worth 30%.



Listening and Reading

Listening and Reading are both assessed by exam papers in June Year 11. You can take either a Foundation Tier or Higher Tier paper in each skill.

In the reading test, you will answer questions about short texts on different topics, for example text messages, advertisements and emails.

The listening is worth 20%.
The reading is worth 20%

What can I do after I've completed the course?

People with language skills and knowledge are highly thought of in the modern world. They stand out as talented and successful people, with broad and exciting horizons! Taking GCSE Spanish means you will:

- have much more fun when travelling to a Spanish speaking country
- be able to study AS and A2 Spanish courses
- add an extra dimension to your personal skills profile which will impress anyone who reads your CV
- be in a stronger position to get a job in companies with international links or to work abroad.

Next steps!

Visit websites, such as the Edexcel website (www.edexcel.com/gcse2009/mfl)
Continue to work hard in your current Spanish studies!

For further information on this qualification please contact : **Mrs B Davies**

PHYSICAL EDUCATION

EXAMINATION / PRACTICAL COURSEWORK ~

EDEXCEL

Single tier	Possible grades	A* - G
Examination:	Written Examinations	40%
	Practical Examination	24%
	Analysis of Performance	12%
Coursework:	Practical	24%

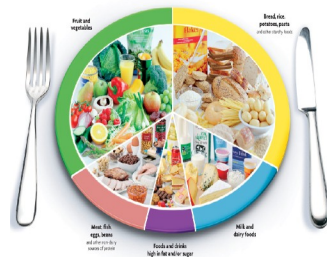
COURSE DESCRIPTION

GCSE Physical Education contains both theoretical and practical elements.

Theoretical

Pupils will be tested on their knowledge and understanding of:

- The structure and function of the body
- The effects of exercise and benefits of training on the human body
- The rules, tactics and relevant safety aspects of selected physical activities
- Common sports injuries and relevant first aid
- Diet and nutrition
- Factors affecting participation and performance



Practical

Pupils are assessed on their skills and abilities in four chosen activities. The selection is made from the following:

Hockey	Rounders	Badminton
Netball	Athletics	Football
Dance	Gymnastics	Fitness
Swimming		

Pupils may also choose to be assessed in sports where they have gained experience outside school e.g. karate, trampolining etc.

Assessment in practical areas will be an ongoing process which will culminate in a practical examination at the end of the course.



For further information on this qualification please contact: **Ms K Crummey**

BTEC First Certificate in Sport

Edexcel BTEC level 2 First Certificate in Sport

- Designed to introduce learners to working in the sport and leisure industry or prepare them for further study such as a BTEC National Qualification or an appropriate NVQ.
- 3 lessons a week to with both theory and practical units with some off site work.
- The course involves 100% internal assessment via portfolio.



BTEC First Certificate grading system :

Pass	2 grade C GCSE's
Merit	2 grade B GCSE's
Distinction	2 grade A GCSE's

Core Units

- **The Body in Sport**
- **Health, Safety and Injury in Sport**

Students MUST complete at least one of these units.

Specialist Units

- **The Sports Industry**
- **Preparation for Sport**
- **Planning and Leading Sports Activities**
- **Practical Sport**

Students must complete all four units.

For further information on this qualification please contact: **Mrs K Crummey**

TECHNOLOGY OPTIONS

GCSE IN FOOD TECHNOLOGY

AQA EXAMINING BOARD

Controlled Assessment and Examination

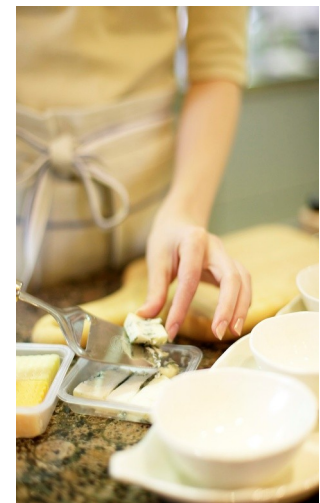
Pupils complete a design and make task which accounts for 60% of the final GCSE grade. This includes practical work and a folder which is completed by E Portfolio.

The examination is 1½ hours and untiered.

Pupils must be aware that the purchase and bringing in of ingredients occurs on a weekly basis, failure to do so results in pupils been exempt from practical lessons and not gaining the practical skills needed to pass the Controlled Assessment in Year 11.

Why study Food Technology?

- Would you like a practical and design challenge?
- Do you enjoy working with food?
- Would you like to keep up to date with the technological issues in food and industry?
- Would you like to develop lifelong skills?



Subject details: Food Technology at Key stage 4 provides pupils with the opportunities to design, make and evaluate their own products. Pupils investigate food as a material, its properties, the effects of processing and the appropriate selection of tools and equipment which enable it to be cut, formed, shaped and finished. Written and practical work, together with regular homework's is integral within the course.

For further information on this qualification please contact: **Ms C Adamson**

GCSE CATERING

Examining Board:- WJEC

ASSESSMENT

40% Practical Assessment—2 x 3 hour sessions
20% Coursework
40% Written Examination



There are 2 tiers - Higher and Foundation.

COURSE CONTENT ~ What will you study?



1. The Catering Industry
2. Nutrition and Menu Planning
3. Food Production
4. Technological Developments



You will work with a wide range of ingredients and you will prepare lots of interesting dishes e.g. Soups & Starters, Fish, Meat, Pastry, Cakes, Desserts, Bread. You will prepare meals for various dietary needs.



Is this course for me

Do you have a natural flare for cooking? You need to have an interest in and enjoyment of food preparation and presentation. This course involves a lot of practical work so you need to be well organised and be prepared to purchase ingredients weekly.

Progression

This course is a suitable basis for further study at 16+ offering progression on to academic and a variety of other vocational courses. This GCSE provides an excellent background for anyone interested in working in the food industry.

For further information on this qualification please contact: **Ms C Adamson**

GRAPHIC PRODUCTS

EXAMINATION / CONTROLLED ASSESSMENT

AQA

Single Tier entry ~ Possible Grades A* - G

Examination Written Paper 40%

Controlled Assessment ~ 60%

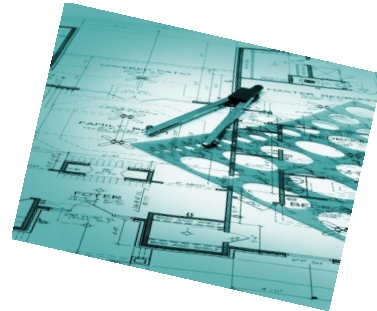


Why Graphic Products

- Design is now a major part of every item manufactured.
- Develop transferable skills in all aspects of design.
- Bring your own ideas to life.
- Good career paths to well paid interesting courses and jobs

What Happens in Graphic Products.

- ◆ You do not have to be good at drawing to do well in graphics but you **MUST** be prepared to try.
- ◆ We teach you to improve your drawing skills , how to use a variety of methods to colour and make your work look good. We will teach you to make quality items using card and light materials.
- ◆ We use Computer Aided Design and Computer Aided Manufacture to produce mini projects which will prepare you for your GCSE coursework.



Projects

- ◆ Your first mini project will be for you to come up with ideas and produce the cover for a teenage magazine.
- ◆ Your next project will be to design and produce packaging for a new fast food company.
- ◆ Your GCSE coursework will be to design and produce promotional material for a company of your choice.
- ◆ You will be expected to do research and investigation in you own time. Your ideas will come to life in a high quality and professional way.

For further information on this qualification please contact: **Ms C Adamson**

RESISTANT MATERIALS

EXAMINATION / CONTROLLED ASSESSMENT

AQA

Single Tier entry ~ possible Grades A* - G

Examination Written Paper 40%

Controlled Assessment ~ 60%

Why Resistant Materials

- Design and make using the latest technology .
- Develop transferable skills in all aspects of design.
- Bring your own ideas to life.
- Good career paths to well paid interesting courses and jobs in con-

What Happens in Resistant Materials

- ◆ You do not have to be good at drawing to do well in Resistant Materials but you MUST be prepared to try.
- ◆ We teach you to design and to use a variety of methods to manufacture.
- ◆ We will teach you to make quality items using wood, metal and plastics .
- ◆ We use Computer Aided Design and Computer Aided Manufacture to produce mini projects which will prepare you for your GCSE coursework.

Projects

- ◆ Your first mini project will be for you to come up with ideas and produce the educational toy .
- ◆ You will produce a design folder and be taught to use the machines to manufacture your ideas .
- ◆ Your GCSE coursework will be to design and produce a new lighting system for a modern apartment.
- ◆ You will be expected to do research and investigation in you own time. Your ideas will come to life in a high quality and professional way.

For further information on this qualification please contact: **Ms C Adamson**

TEXTILE TECHNOLOGY

EXAMINATION / CONTROLLED ASSESSMENT

AQA

Single Tier entry

Possible Grades A* - G

Examination Written Paper

40%

Controlled Assessment ~

60%

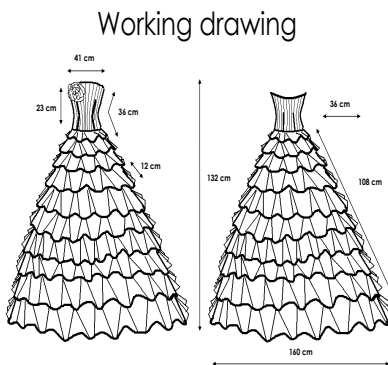
A single design and make activity



✂ ✂ If you:

- ◆ Have enjoyed Textiles during KS3
- ◆ Like designing and making products
- ◆ Are interested in fashion and fashion design
- ◆ Enjoy working with a computer, colour and fabrics
- ◆ Have been impressed with the fashion work in the Textiles rooms and the Fashion Show
- ◆ Are hardworking and can meet deadlines
- ◆ Appreciate your work being displayed and admired
- ◆ Can put up with the Textiles teachers and their relentless demands

Then this could be the course for you!!



✂ ✂ During this two year course you will:

- ◆ Put together a portfolio of design work
- ◆ Present a range of fashion design ideas
- ◆ Design and make a selection of products
- ◆ Learn about different fibres, fabrics and smart materials
- ◆ Carry out a range of product analysis tasks
- ◆ Experiment with a wide variety of decorative techniques
- ◆ Investigate practices applied in industry

Textiles technology offers pupils a wide range of opportunities in Textiles. The Textiles department is well equipped with the latest computer technology which helps to promote a link with industry and gives pupils an insight into the real world of Textiles and current technologies.

Please note: It is not a necessity for students to have an artistic flair to study Textiles at GCSE level.

For further information on this qualification please contact: **Ms C Adamson**



BTEC EXTENDED CERTIFICATE IN ART & DESIGN — TEXTILES FOCUS

**Examining Board
Assessment**

**Edexcel
100% Coursework
Pass, Merit & Distinction
Equivalent to 2 X GCSE's(A-C)***



All units are assessed and an overall grade for the qualification is awarded.

CONTENT

This is a vocational qualification and the projects are based on work related scenarios in order to give students an insight into the process of working to textile design briefs.

- ◆ Students will follow the Edexcel specification that is made up of 2 compulsory units and 1 specialist units.
- ◆ 5 projects are covered during the 2 year course giving pupils the opportunity to develop their mark making, designing and making skills.
- ◆ Students will design and make a textile hanging and a fashion garment.
- ◆ Students will visit the Stockport Hat museum and a fashion history museum.
- ◆ Students will take part in national competitions and will meet working designers.



=====

1 Specialist Unit

	Unit No. : 10	
	Title : Working with Textile Design Briefs	
	Method of Assessment : Portfolio Work	
	=====	



=====

3 Compulsory Core Units

	Unit No. 1 : Contextual References in Art & Design	
	Unit No. 2 : 2D Visual Communication	
	Unit No. 3 : 3D Visual Communication	
	Method of Assessment : Portfolio Work	
	=====	

WHY CHOOSE THE BTEC FIRST CERTIFICATE?

The course is open to pupils who have enjoyed textiles during KS3 and wish to continue their design education on an **applied course that is 100% assessed coursework** with no written exam. It is particularly suitable for students who are undertaking other applied courses at KS4 and enjoy working in a structured environment. All work produced on the 2 year course is assessed and an overall grade for the qualification is awarded.

NB Pupils who wish to take BTEC First Certificate in Art and Design with a 3D focus with the art department cannot enrol on this course but can develop their textiles knowledge and application by opting for the AQA Textiles technology

PROGRESSION

Pupils who complete the BTEC first certificate in Art & Design can progress to the BTEC Nationals in Art & Design or similar level 3 applied courses.

For further information on this qualification please contact: **Ms C Adamson**

BTEC EXTENDED CERTIFICATE IN ART & DESIGN — GRAPHICS FOCUS

Examining Board: Edexcel
Assessment: 100% Coursework
Pass, Merit & Distinction
Equivalent to 2 X GCSE's(A-C)*



All units are assessed and an overall grade for the qualification is awarded

CONTENT

- ♦ This is a vocational qualification and the projects are based on work related scenarios in order to give students an insight into the process of working to Graphic Design Briefs.
- ♦ Students will follow the Edexcel specification that is made up of 2 compulsory units and 1 specialist units.
- ♦ 5 projects are covered during the 2 year course giving pupils the opportunity to develop their mark making, designing and making skills.
- ♦ Students will redesign the corporate identity of an airline and make packaging to promote the new identity, suitable for promotional gifts on a long haul flight.
- ♦ Students will visit the Manchester Airport to look at signage and advertising.
- ♦ Students will take part in national competitions and will meet working designers.

1 Specialist Unit

Unit No	:	7	
Title	:	Working with Graphic Design Briefs	
Method of Assessment	:	Portfolio Work	

3 Compulsory Core Units

Unit No. 1	:	Contextual References in Art & Design	
Unit No. 2	:	2D Visual Communication	
Unit No. 3	:	3D Visual Communication	
Method of Assessment	:	Portfolio Work	

WHY CHOOSE THE BTEC FIRST CERTIFICATE?

The course is open to pupils who have enjoyed Graphics during KS3 and wish to continue their design education on an **applied course that is 100% assessed coursework** with no written exam. It is particularly suitable for students who are undertaking other applied courses at KS4 and enjoy working in a structured environment. All work produced on the 2 year course is assessed and an overall grade for the qualification is awarded.

NB Pupils who wish to take BTEC First certificate in Art and Design with a 3D focus with the art department cannot enrol on this course but can develop their graphics knowledge and application by opting for the AQA Graphic technology

PROGRESSION

Pupils who complete the BTEC first certificate in Art & Design can progress to the BTEC Nationals in Art & Design or similar level 3 applied courses.

For further information on this qualification please contact: **Ms C Adamson**

INFORMATION AND GUIDANCE

In addition all students will have access to The Careers Education, Information, Advice and Guidance Programme within the curriculum which prepares students for adult and working life in the 21st Century. The provision, in partnership with **Connexions**, helps students to manage their own pathways through learning and work. It promotes the knowledge and understanding, skills and values which enable students to learn about themselves and their capabilities, to research the opportunities available to them and make plans to achieve their goals. Equality of opportunity underpins the programme and reflects the specific additional needs of particular groups of students such as those with learning difficulties and/or disabilities, the disaffected and highly able. The provision is in the form of additional discrete activities and integrated activities across the curriculum with other subjects. A mentoring scheme operates to give students extra help and guidance to plan strategies to reach their goals and achieve success.



Opportunities to find out about the world of work can be experienced during visits to specific events e.g. **Careers In Engineering, Construction, Festival of Skills** and a two week **Work Experience** entitlement. **Enterprise Days** with visiting speakers, enhance curriculum provision. Drama groups, e.g. **HE4ALL**, give presentations to inform and entertain.

The Careers Library is electronically stored on the computer network which has the latest software installed, e.g. Kudos, Pathfinder and HE.

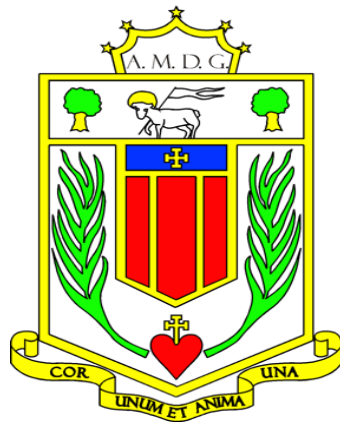
For choosing courses post 14 & 16 visit www.i-chooseliverpool.org.uk and current vacancies on www.connexionslive.com.

Students can e-mail directly our Connexions Personal Advisors ~

Karen.Meagher@connexionslive.com and karen.yates@connexionslive.com.



Skills are developed through a variety of activities, e.g. mock interviews take place in Year 10 which involve students preparing the relevant documentation and being interviewed by a personnel manager from industry. **All students in Year 11 are entitled to an interview with a Connexions Personal Advisor and senior management meet with parents and students to discuss their progress and options at the end of KS4.**



**Broughton Hall High School
Technology College**

Yew Tree Lane
West Derby
Liverpool L12 5HJ

Phone: 0151 228 3622
Fax: 0151 228 1980
Email: admin@broughtonhall.com
Website: www.broughtonhall.com