

How to connect to the internet on your laptops

This guide is very simple to follow and you will mostly be clicking one button.

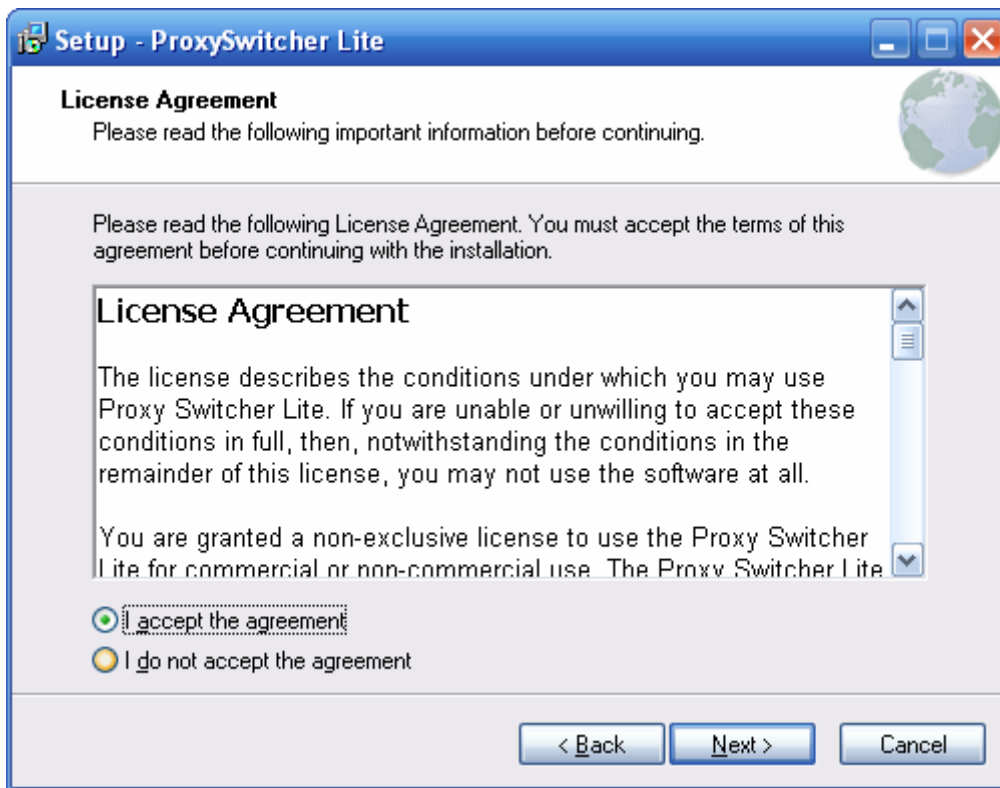
1. Download **ProxySwitcher.exe** from the Broughton Hall Website, once it has downloaded to your computer, open it.



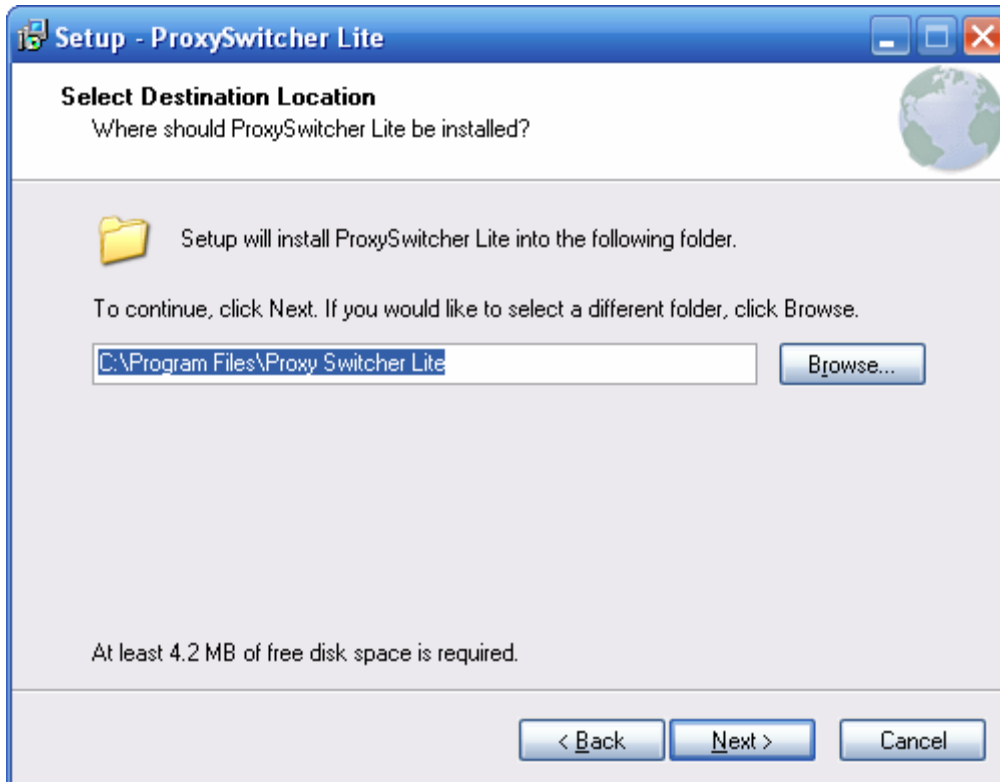
2. If this window above is displayed, click **Run**.



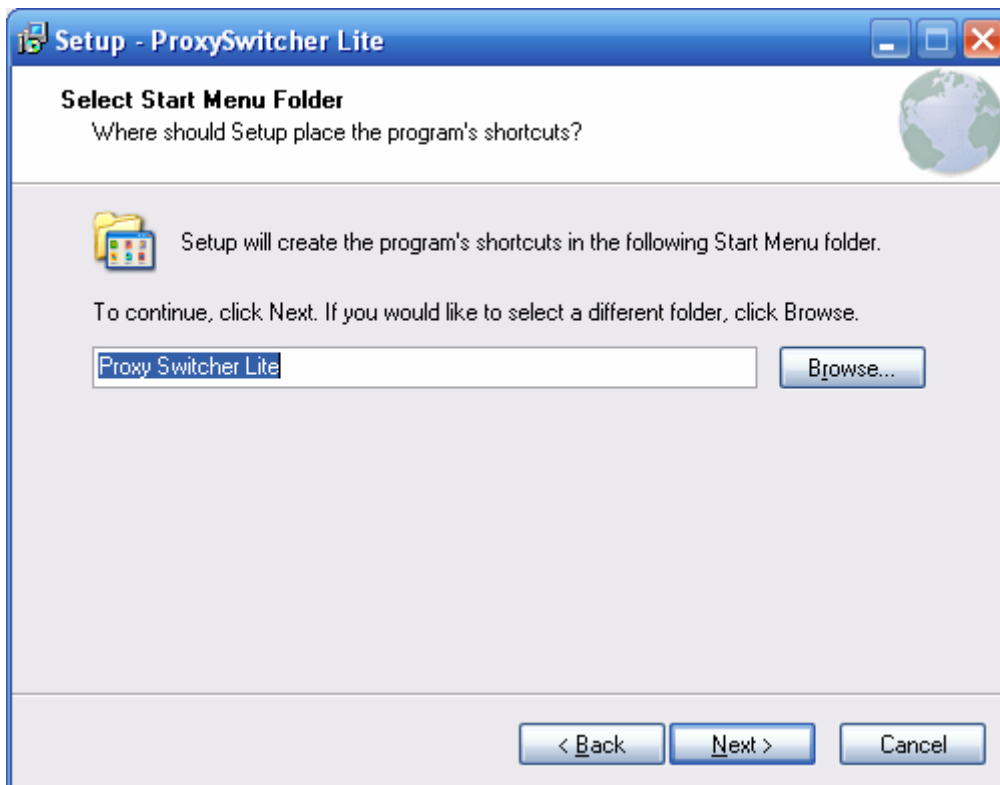
3. Click **N**ext.



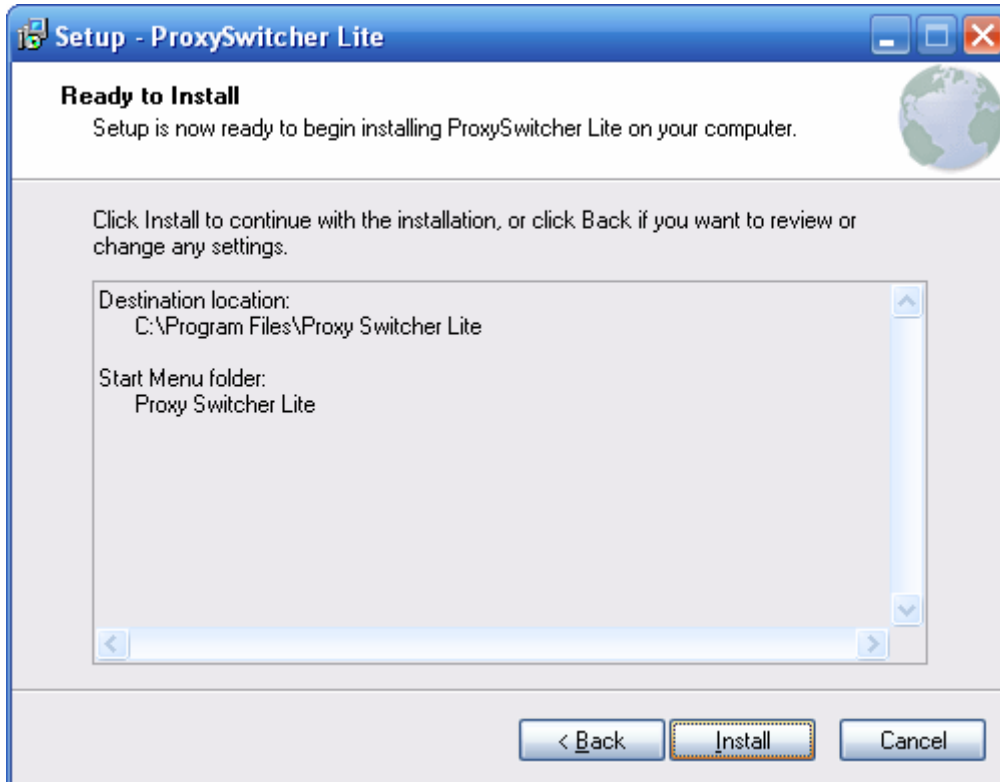
4. Click the **I accept the agreement** circle so the green dot appears in it as seen above and then click **N**ext.



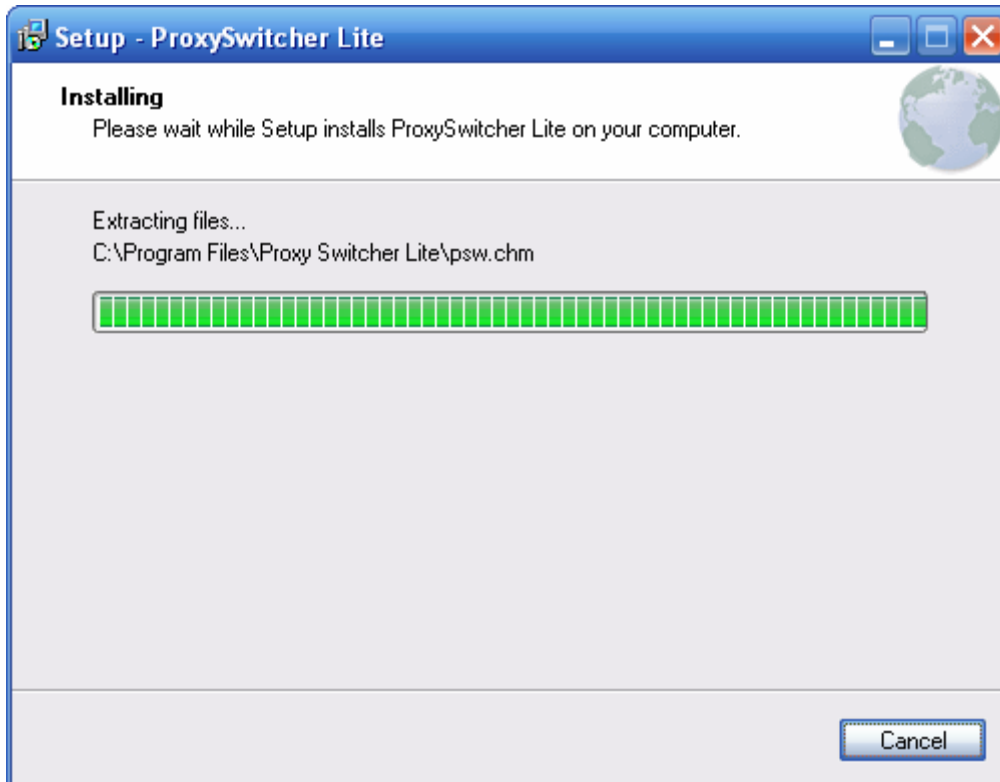
5. Click **N**ext on the above screen.



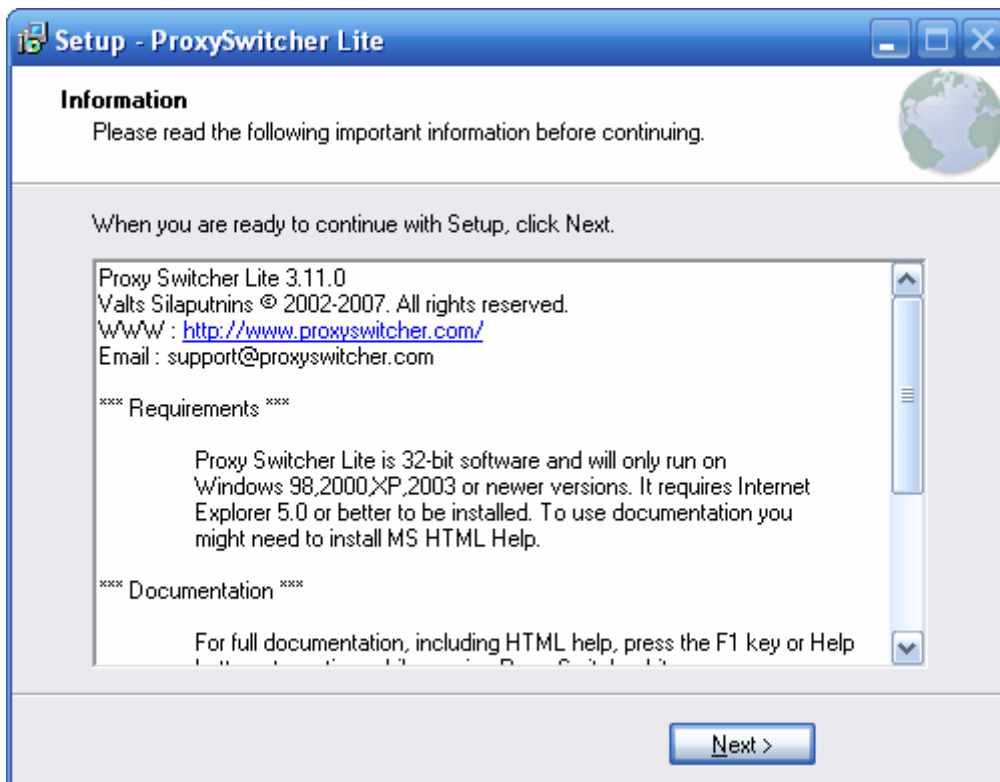
6. Click **Next** on the above screen.



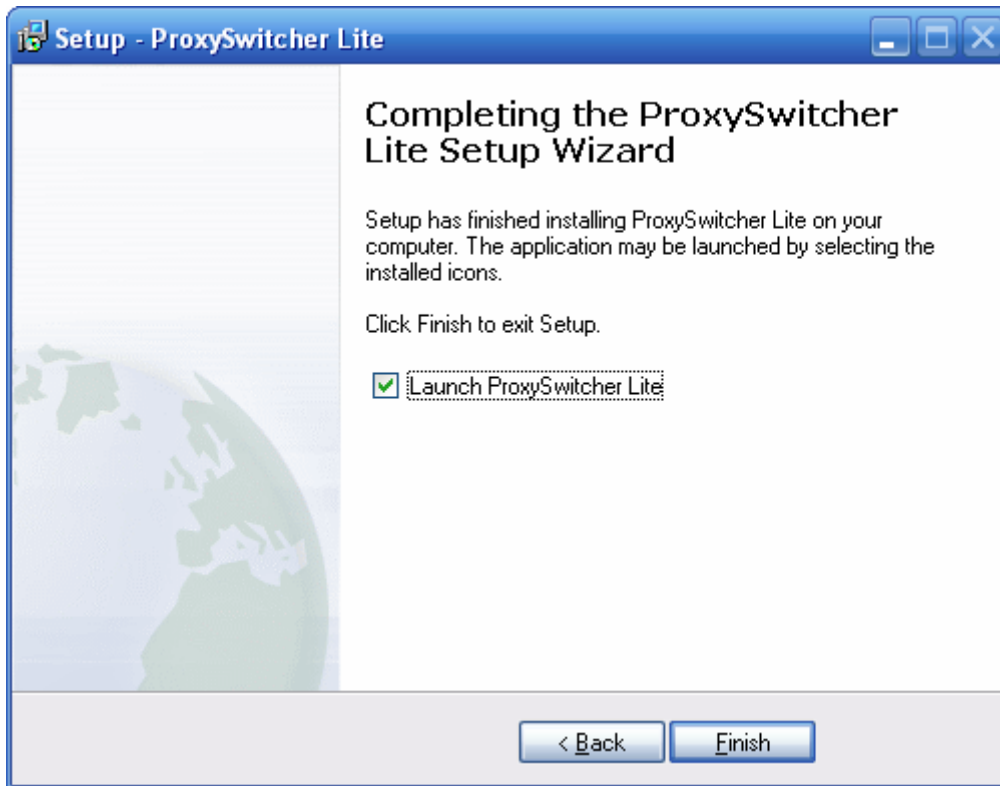
7. Click **Install** on the above screen.



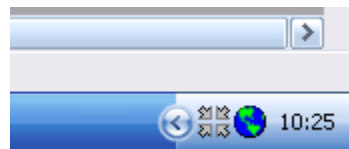
8. The software will now install as seen in the above screen.




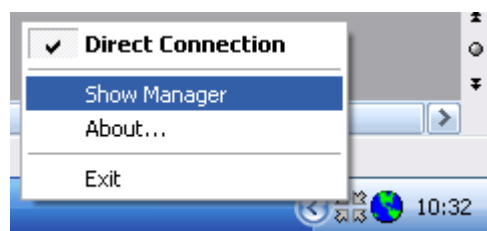
9. When the software has finished installing it will display the above screen, click **Next**.



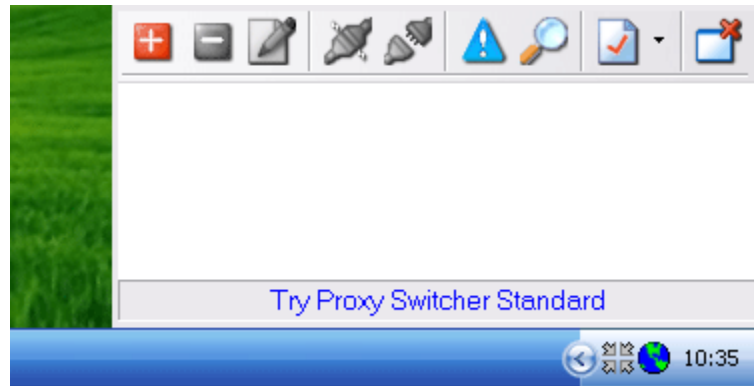
10. On the next screen click **Finish**.




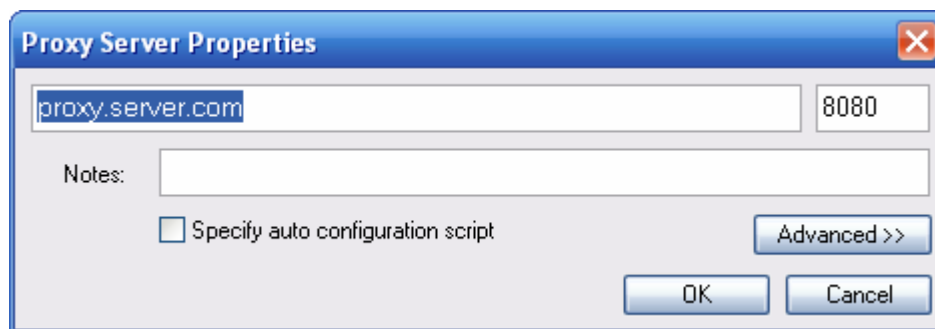
11. A small icon will appear in the toolbar in the bottom right hand corner next to the clock as seen above. The icon is this one , four arrows.



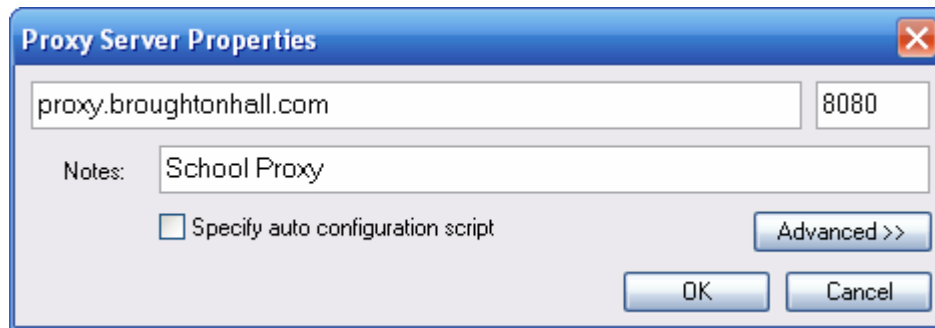
12. **Right Click** on this icon and then **left click** on the option **Show Manager**.



13. The manager will open as seen above, click this button .

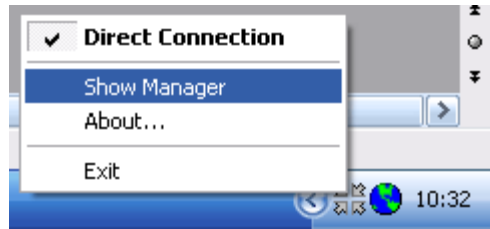


14. The screen above will be displayed.

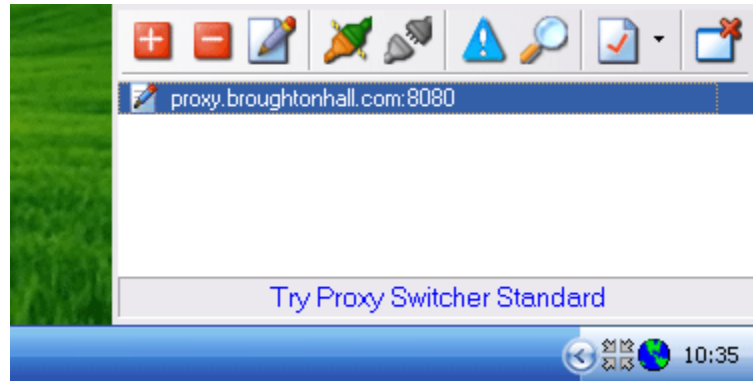



15. Enter the above information by typing it in. So you are replacing proxy.server.com with **proxy.broughtonhall.com**, and you are typing **School Proxy** into the Notes area. Then click the **OK** button.

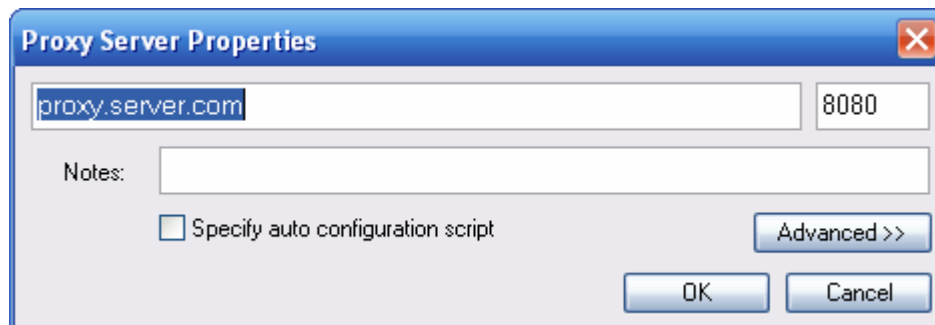
16. You have added the School Internet connection, now you need to add the internet connection you will use at home.



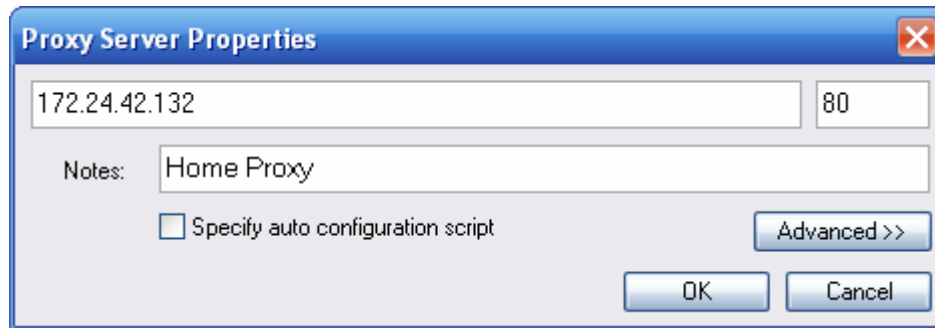
17. Right click on the Four Arrows  icon again, and **left click** on the **Show Manager** option.



18. The above screen will be displayed, click this button .



19. Again we will see the screen above.



20. This time change the settings to those seen above, so replace proxy.server.com with **172.24.42.132**

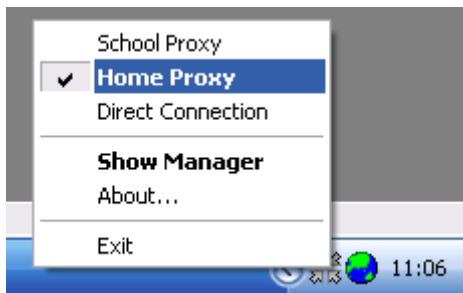
Change 8080 to **80**


And in the Notes area enter **Home Proxy**

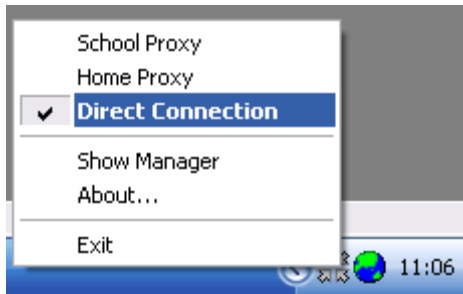
22. Now you have set up the two connections, all you need to do now is select which connection to use.



So if you are at school **right click** on the four arrows icon  and select **School Proxy** as seen above.



If you are at home **right click** on the four arrows icon  and select **Home Proxy**.



If you have your own Internet Connection at home **right click** on the four arrows icon  and select **Direct Connection**.