

CHILD PROTECTION POLICY

The aims of the Child Protection Policy are rooted in the School's Mission Statement: helping each individual to develop her full potential in a welcoming, safe environment.

The Child Protection Co-ordinator must receive training in child protection matters and be aware of current legislation appertaining to child protection. It is his/her role to disseminate information when necessary to the whole staff including support staff, The Child Protection Support Co-ordinator should be a member of the Leadership Team. At present this is Mrs Whelan. Ms Clarke and Sue Reid have also had Child Protection training

All members of staff must receive training in child protection issues.

PROCEDURES FOR DEALING WITH SUSPECTED CASES OF ABUSE.

Any teacher suspecting abuse: physical, sexual, mental or neglect should report their concerns in writing to the Child Protection Co-ordinator who will advise them what to do.

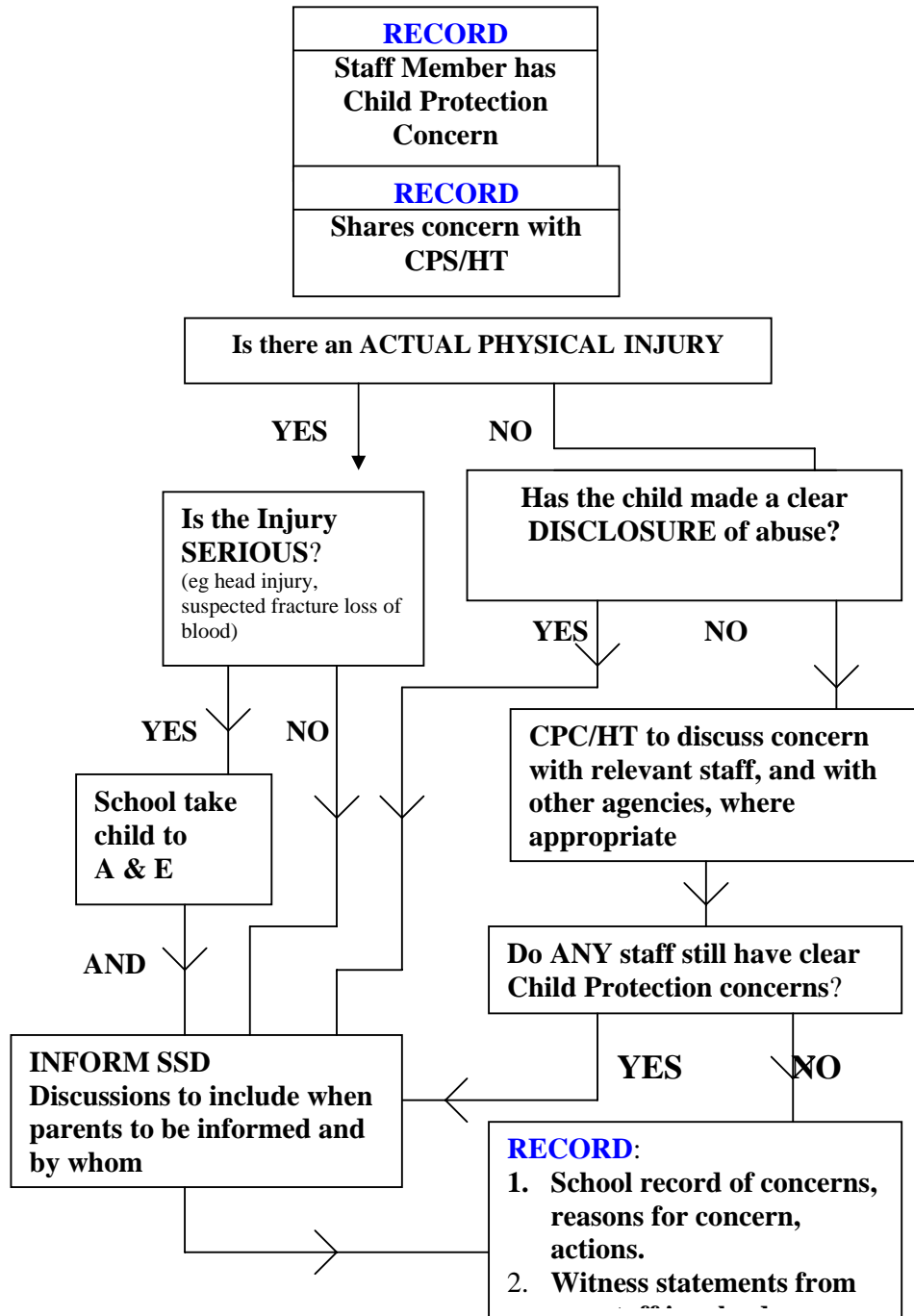
- When abuse is suspected colleagues should seek information from the student with tact and sympathy. DO NOT ask leading questions, eg 'Tell me what happened'? NOT 'Did they do X to you'?
- The Child Protection Co-ordinator will contact social services when necessary.
- Discretion is very important in dealing with cases of suspected abuse. Colleagues should take care only to impart their concerns to the Child Protection Co-ordinator and no-one else, to preserve the dignity, privacy and anonymity of the student concerned.

All colleagues have responsibility for reporting cases which cause them concern. It is better to act and to be wrong than remain silent and contribute to a possible tragedy.

REMEMBER

- To delay reporting a suspicion of abuse could be dangerous.
- In many cases teachers will be the first adults to see a pupil after he or she has been
- abused.
- Many forms of abuse have no physical symptoms.
- The diagnosis of abuse is difficult - even for experts. If in doubt, ask for advice and
- guidance.
- It is vital to liaise with other relevant agencies - no matter how minor the student's injury is.
- It is important to listen carefully to the student, to take what is said seriously and never promise to keep it a secret.
- It is inappropriate to question a child closely about details of an abuse. This should be left to an interviewer skilled in asking such questions.
- Students will usually only confide in people they feel they can trust.
- It is essential that all agencies work together to protect children
- The protection of the student should have first priority.

IN-SCHOOL CHILD PROTECTION PROCEDURES FLOWCHART



CPC = Child Protection Co-ordinator
A & E = Accident & Emergency

HT = Head Teacher
SSD = Social Services Department

NB : Records must be kept of any suspected abuse.

CHILD PROTECTION CONCERN

Pupil's Name **Form**

Brief description of areas of concern

.....
.....
.....
.....

Has this issue been discussed with Year Head YES/NO

Has this issue been discussed with Mrs Whelan YES/NO

Staff Signature **Date**

YEAR HEAD/MRS WHELAN

Is the pupil mentioned above known to any outside agency? (Please state)

.....

Has the matter been discussed with any agency? YES/NO

If yes, give date, time and name of contact person.

Name of Contact

Date Contacted

Time Contacted

Action Taken:

.....
.....
.....

Signed **Date**